



Operating Room Solutions

# CuratOR<sup>®</sup>

## PRODUCTS

EN



EXPERIENCE THE FUTURE OF  
OPERATING ROOM TECHNOLOGY

# Making Each Life Visual

Every life is unique. Every person's medical treatment should be tailored to meet their individual needs.

In the age of precision medicine, the possibilities offered by biotechnologies, artificial intelligence, and information technology open up completely new avenues for diagnosis, prevention, and treatment.

Precision requires comprehensive information. Collecting, linking, and analyzing data, as well as recording, storing, and evaluating image data therefore represents a critical resource for modern medical practices.

Faster treatment success, better quality of life: Technical innovation has an immediate impact on the medical processes in hospitals and operating rooms. Which is why we employ all of our experience and work together with highly qualified medical teams to produce reliable systems for processing image data in the age of precision medicine.

Our knowledge is in the service of better health. Every life is worth it.

Making Each Life Visual.

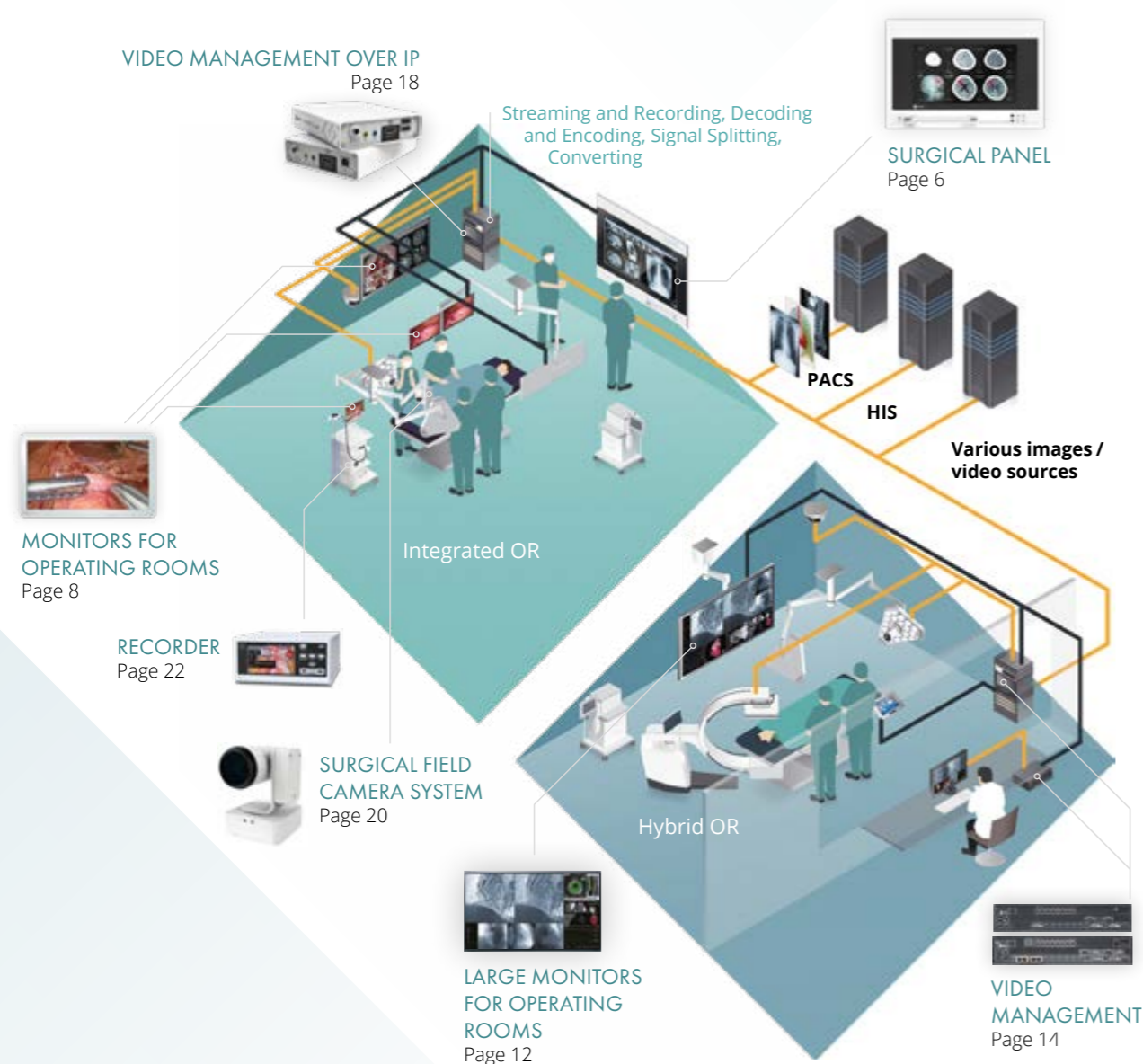


FLEXIBLE. INTELLIGENT. EXPANDABLE.

# OR SYSTEM SOLUTIONS FOR THE OPERATING ROOM

High-performance technology for image reproduction and video management in the OR meets expertise and experience. Designed for scalability and extensibility, EIZO develops visual solutions specifically for the requirements and workflow in the OR. EIZO CuratOR addresses the needs of surgeons, surgical teams and hospital technology. Specializing in the challenges of medical practice in the 21st century.

- Precise image representation for demanding requirements
- Modular system components for customized solutions
- Seamless integration in hospital IT and documentation systems
- Providing information and image data where needed



## A MODULAR SYSTEM FOR EVERY APPLICATION SCENARIO

From a simple workstation to a complex multiroom installation: with its modular design, EIZO CuratOR supports a wide variety of requirements and is almost infinitely expandable.

### The OR Workstation

Central unit for all image and video signals: the Surgical Panel with built-in EIZO monitor and powerful PC. Whether simple image display or central working and operating station – thanks to different expansion options, the Surgical Panel is the flexible basis of an EIZO CuratOR solution.

### Effective Video Management

Image viewing at the press of a button: EIZO's video management solutions support the workflow in the OR. Adapted to the needs of OR staff, CuratOR video management allows you to manage various situations in the OR.

### Interfaces to OR Documentation (HIS/RIS/PACS)

HIS, RIS and PACS systems can be incorporated via existing interfaces. Effortless integration into hospital IT, for example, reduces the amount of documentation required and supports education, validation and process analysis. Flexible, intuitive, personalized.

### Video Management Over IP

With CuratOR Alipe, EIZO provides a powerful way for network-based transmission of video, audio, and control data. Uncompressed and in real time.

### Multiroom Solutions

Whether for documentation or teaching purposes – EIZO CuratOR can be expanded as required and enables the networking and communication throughout different rooms, even over long distances.

### Complete Solution for Visualization in the OR

With a camera for capturing the operation field, surgical monitor for displaying medical images and a recorder for archiving, EIZO offers hospitals a complete solution for visualization in the OR. This Imaging Chain provides high quality and reliable capture, display, and recording of surgical procedures.



## SURGICAL PANEL

# CENTRAL UNIT IN THE OPERATING ROOM

### Viewing Station

Modern operating rooms are no longer conceivable without digital image viewing systems. Surgical Panel with integrated large screens provide the surgical team with excellent images even at a greater viewing distance.



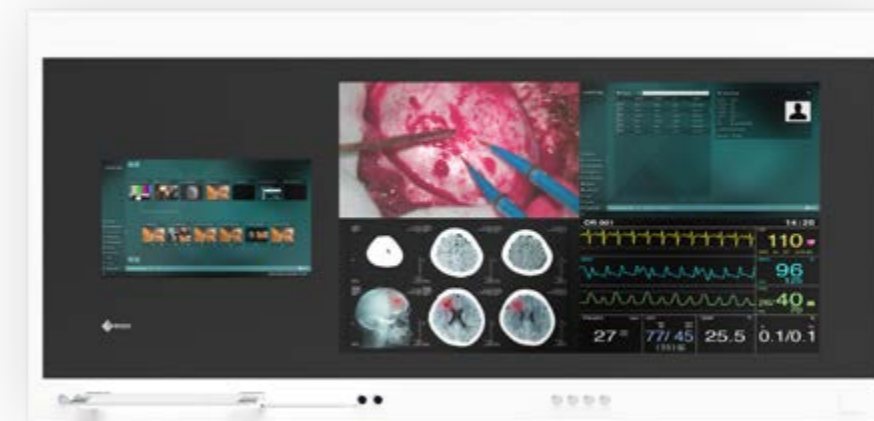
In addition to customer-specific configurations, EIZO offers a number of standard Surgical Panel optimized specifically for a range of applications and effective integration into the operating room workflow.

### Nurse Station

These Surgical Panel are fitted with screen sizes that are ideal for work performed by OR nursing staff. The user-friendly configuration was designed with ergonomic head and body positions in mind and offers ideal viewing conditions when interacting with the local OR systems.

### HIS Station

Surgical Panel with two integrated monitors serve as a space-saving combination of work and viewing stations. Different applications can thus be covered from a single device.



In the digital age, X-ray film and analog X-ray light boxes are a thing of the past. Today's digital systems are integrated into the hospital's IT infrastructure and support a wide range of workflows in the operating room.



### Intuitive Touch Operation

Every Surgical Panel can be equipped with a touchscreen to facilitate intuitive operation of software in the OR. They are easily operated while wearing gloves for use in sterile environments.

### Optimized View Through Simple LUT Switching

All 4K Surgical Panel are equipped with an easy-access LUT switch as standard. One of the predefined lookup tables can be selected at the simple press of a button. This allows optimal display of various medical images and videos.



### Customized Housing

The housing dimensions of the Surgical Panel can be individually adapted to the conditions in the operating room. In addition, the housing color can be selected from the RAL color palette depending on the color concept on site.



### Wide Ranging Monitor Options

The Surgical Panel are available in a wide range of screen diagonals for flexibly meeting local application requirements. The option to combine a viewing unit with a 24" Full HD HIS workstation also offers a full viewing environment while saving on space.



### Flexible Integrated Video Management VMbasic

A modular interior design enables customer-specific configuration. Every 4K Surgical Panel can be optionally equipped with the video management function VMbasic. Easily switch between video signals connected internally or optionally on the front at the simple press of a button. Two further buttons allow the selection of the preset layouts and the rotation of the video inputs by keeping the active layout.



### Accessories and Connectivity

Surgical Panel have front USB ports as standard for connecting peripheral devices. There is also the option of integrating additional interfaces on the front frame. These can be individually connected to the inputs available in video management.



### OR Integration and Cleanability

With its flat surface, the Surgical Panel can be completely sealed in the front and integrated in the OR wall, ensuring safety and simple cleaning and disinfection procedures. With intelligent heat distribution over the front surface, the units do not require specialized ventilation systems.



### Easy Maintenance and Service

The hinged front allows easy access to the device without complicated disassembly or tools. With its unique locking system, no screws need to be taken out, making maintenance procedures on the installed components simple and efficient.



# MONITORS FOR OPERATING ROOMS

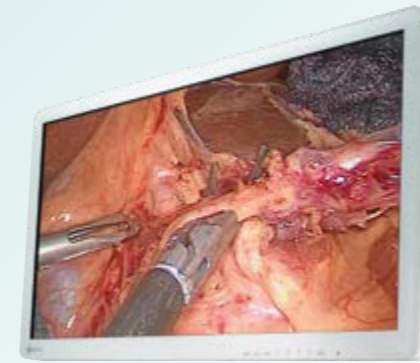
Faithful image reproduction at the highest accuracy allows for precise work in the OR. EIZO's endoscopy monitors assist surgeons perfectly in today's sophisticated minimally invasive and open surgical procedures. With the 3D technology, the surgeon can see organs and tissue structures in lifelike effect of depth.



**EX2721**  
27" (68.6 cm) LCD Monitor  
27" WIDE



**EX2742**  
27" (68.4 cm) LCD-Monitor  
27" WIDE 4K



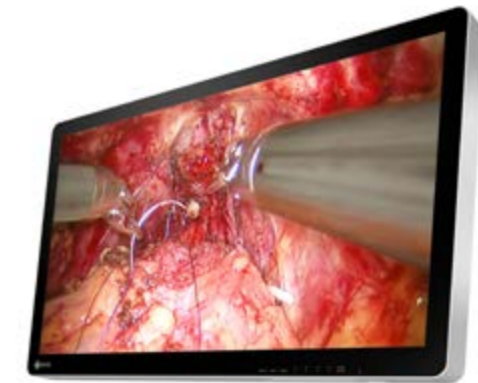
**EX3220**  
31.5" (80.1 cm) LCD Monitor  
31.5" WIDE



**EX3242**  
32" (81.3 cm) LCD Monitor  
32" WIDE 4K



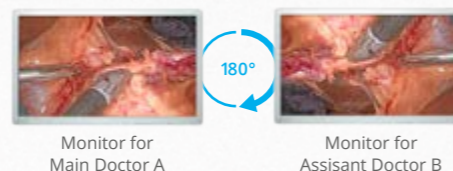
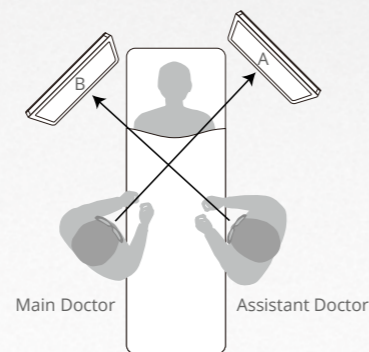
**EX3220-3D**  
31.5" (80.1 cm) LCD Monitor  
31.5" WIDE 3D



**EX3242-3D**  
32" (81.3 cm) LCD Monitor  
32" WIDE 4K 3D

## Fully Flat Design for Safety and Hygiene

In consideration for safety, EIZO's surgical monitors adopt rounded corners. Furthermore the front is covered with a fully flat protective panel that protects against foreign material and splashes to a level of IP45 (whole monitor has IP32 rating). Additionally with the attached cable cover, cables can be stored neatly out of sight, increasing safety and hygiene in the operating room.

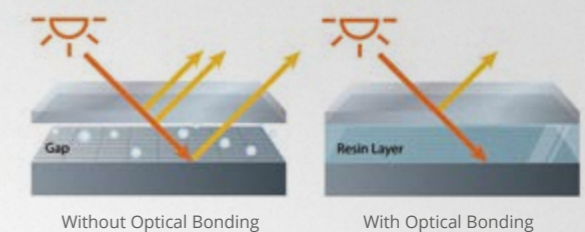


## 180° Rotation and Mirroring

Regardless of the orientation of the surgical camera, you can rotate the displayed image by 180° or mirror it to find the perfect operating view. This allows you to match the image with the line of sight of surrounding assistants and surgeons, improving convenience in the operating room.

## 3D Surgical Display with High Visibility

With high definition, brightness and contrast ratio, the EX3220-3D, and the EX3242-3D faithfully reproduce 3D surgical images for endoscopy and operation microscope feeds; creating a feeling of depth where stereoscopic imagery is required. They use a polarized system to display 3D images in all formats (Side-by-Side, Line-by-Line, Top & Bottom or SIMUL 3D) with excellent color characteristics and without flicker.



## Reduced Reflections and High Durability

The EX2742, the EX3220-3D, the EX3242-3D and the EX3242 are manufactured with optical bonding. This technology eliminates the air gap between the protective glass and the LCD panel, reducing reflections from ambient light. This enhances depth in dark tones and maintains high visibility even under bright surgical lighting. Furthermore, the LCD panel is protected against impact, dust and moisture.

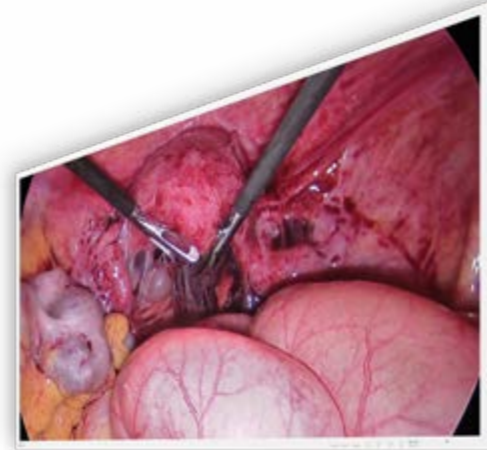
# MONITORS FOR OPERATING ROOMS

Surgical teams in the operating room depend upon the most advanced technologies. Imaging applications have developed to an essential aid. Due to their ultra-high resolution and wide color gamut, EIZO's 4K UHD monitors provide brilliant pictures in completely for a highly detailed view.



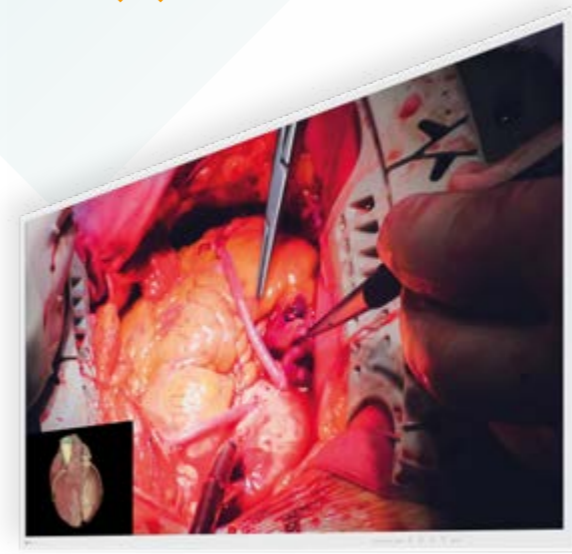
**EX4342**  
43" (109.2 cm) LCD Monitor

43" WIDE 4K



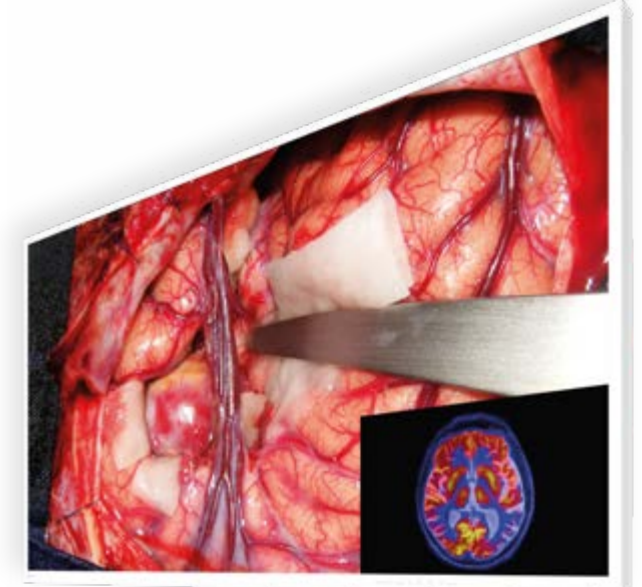
**EX4342-3D**  
43" (109.2 cm) LCD Monitor

43" WIDE 4K 3D 



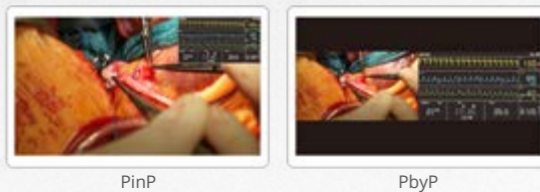
**EX4942**  
49" (124.5 cm) LCD Monitor

49" WIDE 4K



**EX5542**  
55" (139.7 cm) LCD Monitor

55" WIDE 4K



PinP

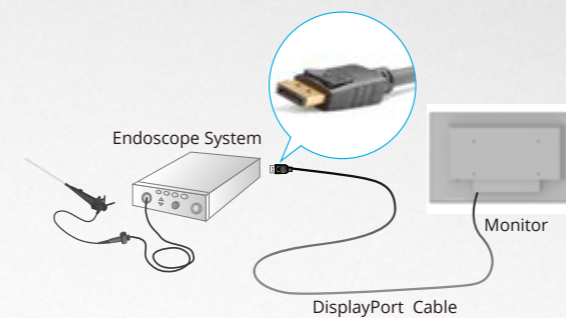
PbyP

## View Two Signals on One Screen

Two different types of signal sources can be viewed simultaneously on one monitor side by side using the PbyP (Picture-by-Picture) or one displayed within an inset window over the other with the PinP (Picture-in-Picture) function. For example, this allows monitoring vitals or ultrasound endoscopes simultaneously in addition to surgical images.

## Lightweight and VESA Mounting

In the OR, largescreen monitors are typically installed on a wall or attached to ceiling fixtures due to their size and weight. The weight of the EX4342 and EX4342-3D of less than 18 kg and compliance with the VESA standard allow it to be reliably attached to supporting medical carts, providing a wide range of flexible installation options to suit the target environment.



## Streamlined Connectivity

Up to 4K UHD images are displayed at 60 frames per second using BNC (12G-SDI), DisplayPort™ or HDMI® signal, with one cable over various modalities. When connected via BNC (12G-SDI), stable transmission is achieved even over long distances of 30 meters.

## Adjust Screens Independently from Each Other

When displaying two signal sources side by side on the same screen, each image's display mode (gamma 1.8 – 2.6 or DICOM® Preset Mode) can be adjusted without interfering with the other image. This is ideal for multi-modality use, where endoscope, CT and MRI images can be displayed precisely on the same monitor.



# MONITORS FOR OPERATING ROOMS

Procedures in modern operating theaters and internal medicine examination rooms require high precision and efficiency. Therefore, it is crucial to create an optimal field of view with maximum visual comfort and ease of use for the medical team.

EIZO's surgical monitors offer special safety concepts and the best possible comfort for long-term, stable and reliable use in the medical environment.

LX1910  
19" (48.3 cm)  
LCD Monitor

19"



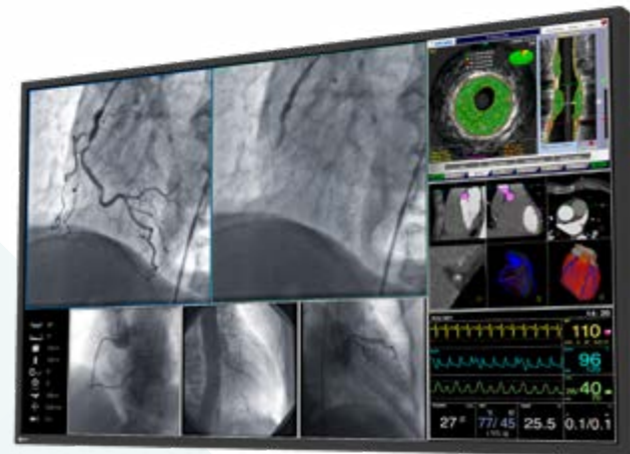
LS1910  
19" (48.3 cm)  
LCD Monitor

19"



LL550W  
54.6" (139 cm) LCD Monitor

54.6"  
WIDE 4K



LX3240-MR  
31.5" (80 cm) LCD Monitor

31.5"  
WIDE 4K



LX2420-T  
23.8" (60.5 cm) LCD Touch Monitor

23.8"  
WIDE

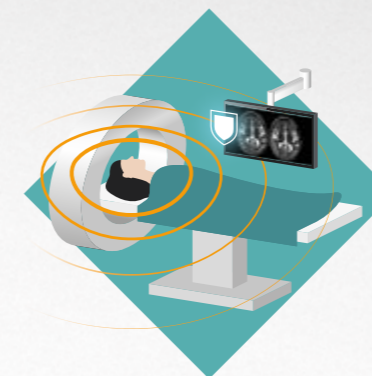
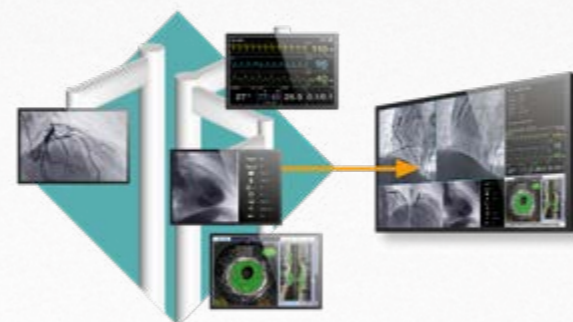


## Consistent Brightness

The monitors have a fully automatic stability system that keeps the brightness consistent according to medical standards such as DICOM or Gamma 2.2. A built-in light sensor in the backlight ensures the monitor maintains its luminance over time.

## Everything in a Single Glance

Compared to solutions with multiple monitors, there are no regional color differences or obtrusive bezels between individual image sections on large screen monitors with high resolution like the LL550W, so that users can conveniently display important information on a single screen.



## MRI Compatibility

The LX3240-MR is built using special materials to minimize impact on magnetic fields and resonators. Furthermore the monitor is shielded against strong magnetic environments up to 100 mT, allowing it to be placed in proximity to an MRI scanner.

## Intuitive Touchscreen Operation

The LX2420-T features projected capacitive touch technology which is more durable and reliable compared to other touch technologies. The touch screen can easily be operated while wearing gloves for use in sterile environments. It can detect up to 10 simultaneous touches across the entire screen.



# VIDEO MANAGEMENT LARGE MONITOR MANAGER

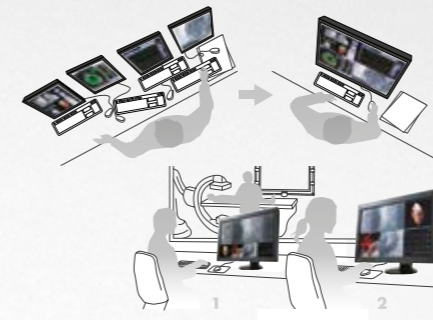
The Large Monitor Manager gathers various video inputs, combines and arranges them in accordance with user preferences, and displays the resulting output flexibly on the connected monitors.



**LMM0802-HDM**  
Large Monitor Manager  
8 inputs, 3 x 4K monitors

## All Gathered in One to Optimize Workflow

The Large Monitor Manager gathers different signal sources and enables you to control them from one location. Users can easily arrange individual image placement and set each window size according to preference for a fully optimized workflow.



## Centralized Working Place

Working with the LMM0802-HDM, the operator can focus on a single monitor, keyboard and mouse instead of juggling with multiple systems. This speeds up workflow and reduces the potential for handling errors. Alternatively, two independent work spaces can be supported when, for example, there is one person responsible for modality information and one person responsible for PACS.

## Local and Remote Control

Layout configuration and layout selection can be performed with a locally attached keyboard and mouse, or via remote browser connected through the web interface. EIZO offers touch screens suitable for the medical environment like the CID1300P to allow users at the surgical table to quickly and conveniently select among the predefined layouts.



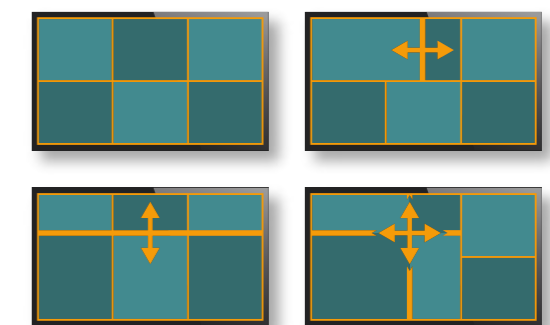
## Expandable Video Inputs and Outputs

Increase the number of connectable video sources and monitors by using the LMM0802-HDM in combination with a matrix switcher\*.

*\*tested and released by EIZO*

## Dynamic Layout

With the LMM0802-HDM, the positions and sizes of the windows specified during system configuration can be enlarged or reduced easily by the operator. In addition, each window can be zoomed in and out.



Easy change of window sizes

# VIDEO MANAGEMENT 12G-SDI SWITCHER

With its integration solution via SDI, EIZO offers professional video management with efficient switching of video signals in the operating theatre. Integration via EIZO's SDI offers impressive real-time transmission, simplified backend installation and minimal cabling requirements for multi-screen display.

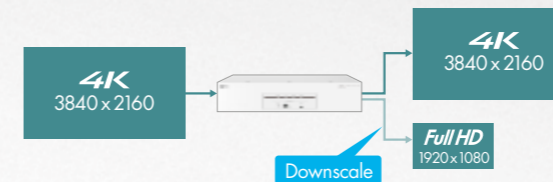
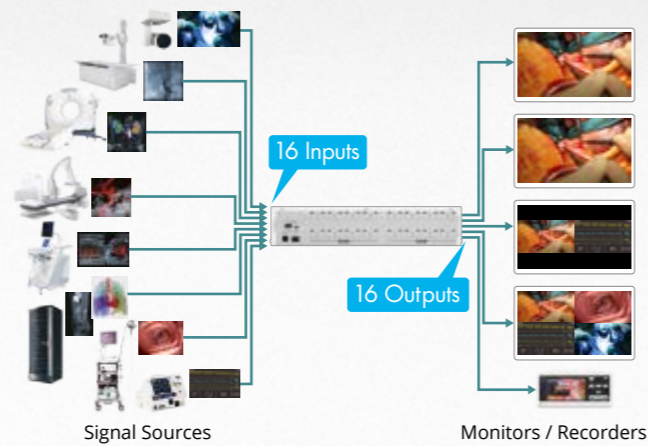


**CXS-1616-12G**  
12G-SDI Switcher  
16 inputs, 16 outputs

## SDI Video Signal Centralized Switching

With 16 inputs and 16 outputs (12G-SDI, 6G-SDI, 3G-SDI, HD-SDI, and SD-SDI), the CXS-1616-12G consolidates multiple video signals from various devices in the operating room, such as cameras or endoscopes.

This allows for centralized control and efficient switching of video signals, ensuring they are transmitted to the necessary destinations, such as monitors or recorders.



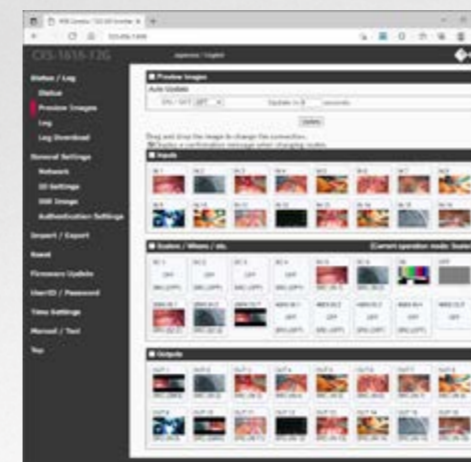
## Built-in Downscaling

The downscaling function enables 4K (3840 x 2160 pixels) resolution input signals to be output in Full HD (1920 x 1080) resolution, eliminating the need for an external converter. It also supports downscaling from DCI 4K (4096 x 2160 pixels)\*.

*\* Image is sidecut to 3840 x 2160 and then downscaled to 1920 x 1080.*

## Instantaneous Image Viewing

Images are transmitted with no perceptible delay, offering a seamless hand-eye coordination experience for the attending specialist. Even when using a scaler, delay is less than 0.01 frames (less than 0.08 ms).



## Intuitive Operation with Web Console

Switching and distribution control, settings, and firmware updates of the switcher can be managed from a network-connected PC using a web-based application. Thumbnail images generated from the input video enhance visibility and usability of input/output settings and facilitate connection checks.

## Simplified Multi-Signal Output

Two or four different input signals can be selected and output for simultaneous side-by-side display on a monitor or recorder using the PbyP (Picture-by-Picture), PinP (Picture-in-Picture), or 4MIX function. This eliminates the need to connect additional signal cables to monitors or recorders.

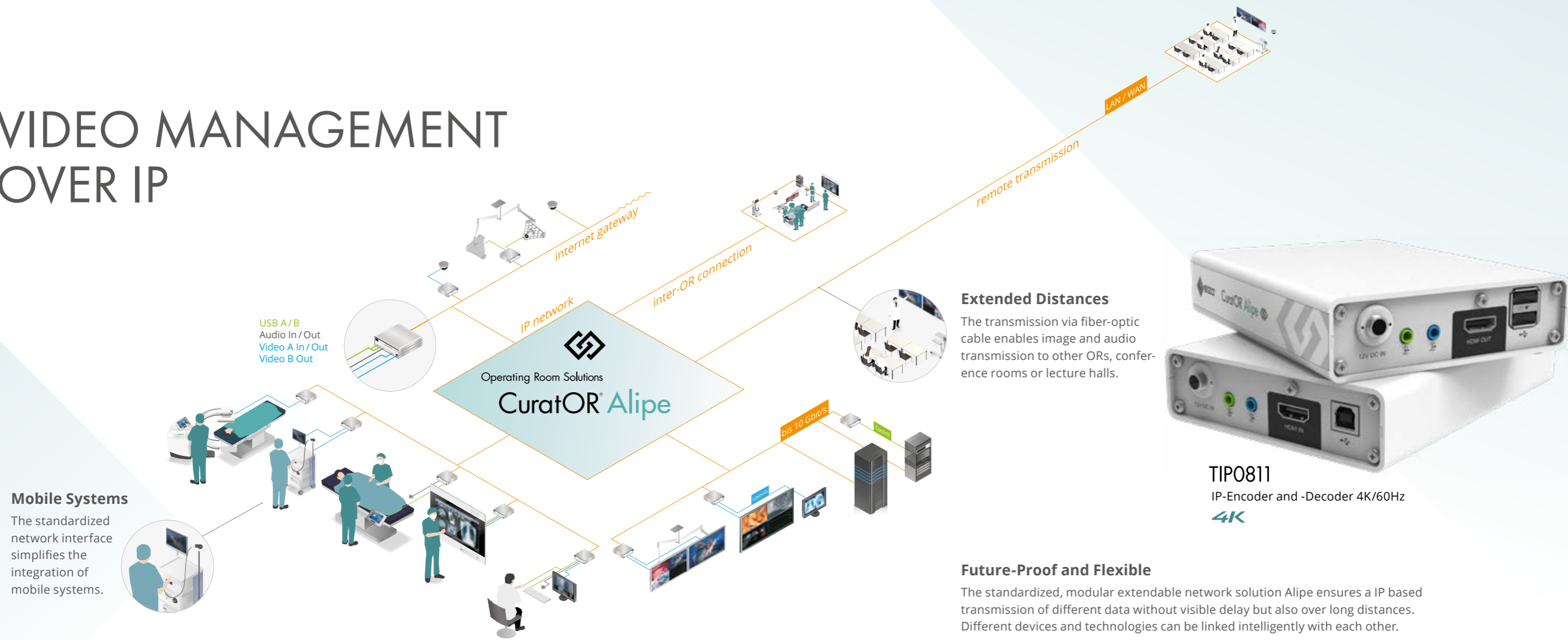


PbyP

PinP

4MIX

# VIDEO MANAGEMENT OVER IP



## Mobile Systems

The standardized network interface simplifies the integration of mobile systems.

## Extended Distances

The transmission via fiber-optic cable enables image and audio transmission to other ORs, conference rooms or lecture halls.

## Future-Proof and Flexible

The standardized, modular extendable network solution Alipe ensures a IP based transmission of different data without visible delay but also over long distances. Different devices and technologies can be linked intelligently with each other.



**TIPO811**  
IP-Encoder and -Decoder 4K/60Hz  
**4K**

## Lossless Transmission up to 4K

The TIPO811 leverages a 10 Gbps infrastructure for lossless transmission of up to 4K UHD (3840 x 2160) at 60 Hz without compression. This ensures optimal image quality of high-resolution video.

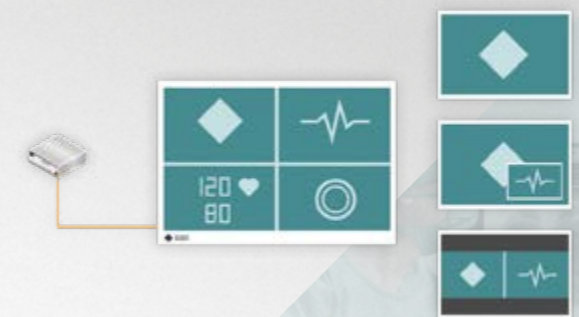


## Instantaneous Image Viewing

Image transmission occurs without visible delay, providing physicians with a highly realistic sense of movement to support precise hand-eye coordination during endoscopic procedures.

## Remote Control Capability

IP-based data transmission allows all information, such as images, audio, video, and control signals, to be sent over a single fiber optic cable. This unified approach enables the creation of advanced KVM solutions, where remote computers can be operated directly from the operating room system via the Alipe network.



## Integrated Multiple View with KVM Control

The integrated KVM functionality allows users to display and control multiple image sources simultaneously on a single screen using layouts such as Picture-in-Picture, Side-by-Side, and QuadView.



# SURGICAL FIELD CAMERA SYSTEM

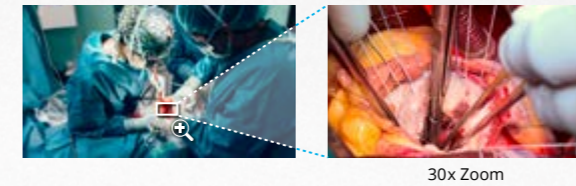
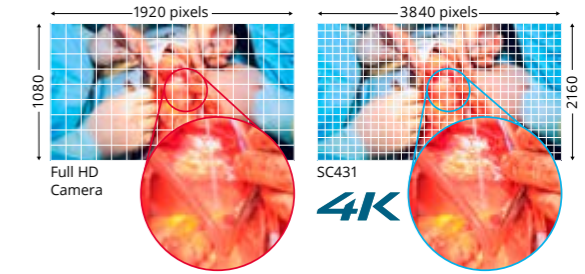
Capturing surgical proceedings in detail is vital for various purposes such as medical research or surgeon training. The CuratOR SC431 clearly captures the surgical field in 4K UHD resolution and comes fully integrated with a triaxial camera mount for versatile positioning.

**SC431**  
4K/60p Surgical Field Camera System  
**4K**



## 4K Ultra-High Definition Resolution

The SC431 captures images in 4K UHD resolution (3840 x 2160) with a progressive 60 Hz signal for smooth, high definition images of the surgical field.



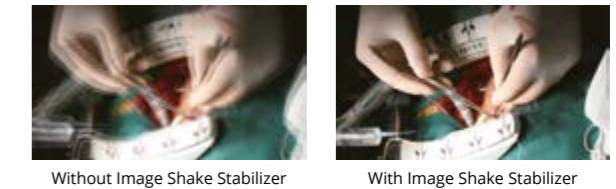
## Detailed View with 30x Zoom

The 30x optical zoom lens allows the camera to zoom into small target areas, capturing narrow surgical sites in remarkable detail. The camera supports the attachment of Neutral Density (ND) filters to reduce the intensity of light entering the lens, preventing glare and overexposure.

*A Neutral Density (ND) filter comes attached as standard.*

## Stabilization Technology for Clear Imaging

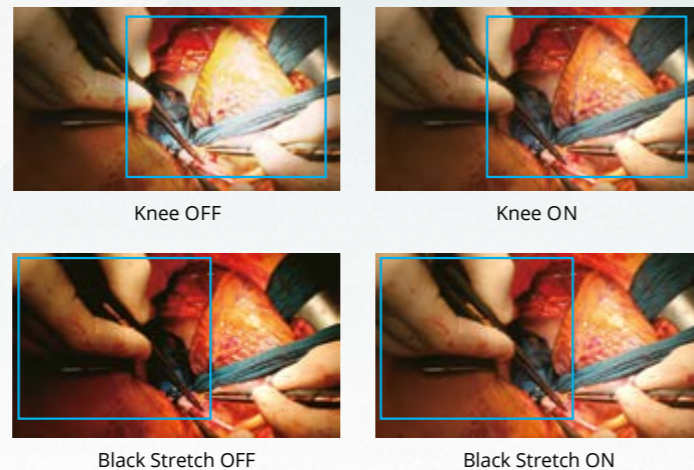
The camera head is equipped with EIZO's proprietary Image Shake Stabilizer function, which reduces chronic micro-vibrations, such as those caused by air conditioning units, as well as subtle jitter when zooming.



## High-Quality Imaging

The Knee function reduces halation from surgical lights, while the Black Stretch function enhances visibility in dark areas of the image.

Noise Reduction improves overall clarity by minimizing visual interference, and 10-bit color output allows for smooth gradations between tones. Together, these functions ensure optimal, well-balanced image capture, even in shadowless or low-light environments

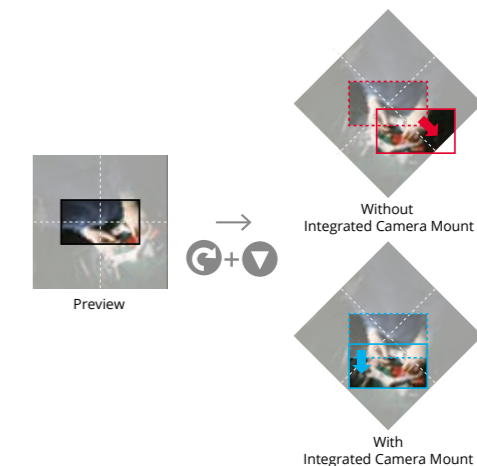


## Fully Integrated Camera Mount

The camera is fully integrated with a mount, offering a pan range of +/-170 degrees, a tilt range of +90 to -30 degrees, and a roll range of +/-200 degrees. This allows for flexible adjustment of the field of view to the optimal position.

## Smooth and Intuitive Camera Movement

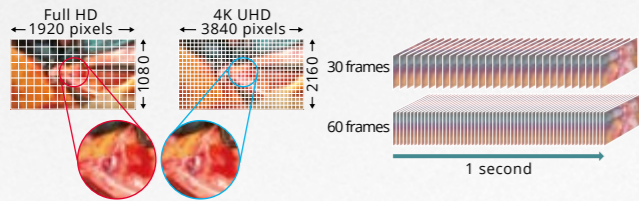
The integrated camera mount allows for smooth and intuitive panning and tilting. Movements remain parallel to the field of view, regardless of the roll position, providing seamless control.



# MEDICAL IMAGING RECORDER

The MIR-1 records medical imaging from endoscopy, operating microscopes, or surgical field cameras in high-quality 4K/60p. It can be used to facilitate medical education, training, and research with video recordings of surgical procedures.

**MIR-1 4K**  
4K/60p Recorder for Archiving Surgical Video and Images



## High-Quality Recording of 4K Surgical Video

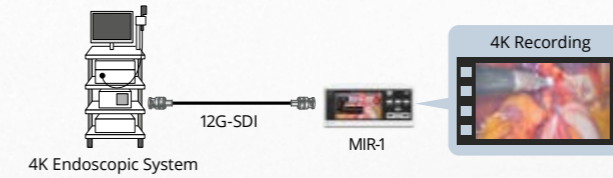
The MIR-1 can natively record video at 4K UHD (3840 x 2160 pixels), as well as scale down to Full HD (1920 x 1080 pixels) resolution. It records at 60 frames per second for high-quality, smooth images. It can also capture and store still images in addition to video.

## Connectivity with a Wide Range of Modalities

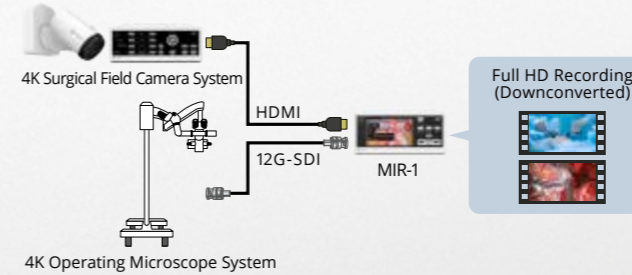
The MIR-1 is equipped with BNC (12G-SDI) and HDMI video input terminals that support up to 4K UHD (3840 x 2160) resolution at 60 frames per second. With a single unit, you can connect to both existing Full HD equipment and the growing number of 4K devices.



### Connect 4K Device for Recording



### Connect Two 4K Devices for Simultaneous Recording



## Simultaneous Recording from Multiple Devices

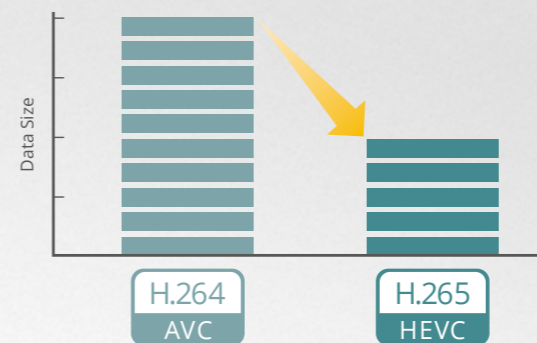
The MIR-1 supports dual-channel input, allowing simultaneous recording of video from various devices in the operating room, such as endoscopic systems and patient monitors.

*4K input signals are downconverted to Full HD when recording simultaneously.*

## High-Speed, Robust Internal Memory

The MIR-1 is equipped with a high-speed SSD (solid state drive) that is highly robust and resistant to vibration and shock. With a large capacity of 2 terabytes, up to 175 hours of 4K video or 885 hours of Full HD video can be stored in its internal memory.

*Recording time varies depending on recording conditions.*



## H.264 and H.265 Video Compression

The MIR-1 supports both widely adopted H.264 (AVC) and H.265 (HEVC), which delivers twice the compression efficiency without compromising image quality. Operators can select the optimal compression standard based on their playback or editing requirements for the recorded surgical video.

## MIR Browser Software Solution

The CuratOR MIR Browser is a software solution that enables physicians to view, edit and manage surgical videos recorded on NAS or external media directly from PCs in offices or conference rooms. It reads patient data entered during recording and provides a range of tools to review or edit videos for consultations, research, and training, enhancing workflow and educational value.



# SIGNAL ROUTING DEVICES

EIZO also offers flexible and easy-to-install signal routing solutions for use with its monitors and Large Monitor Managers.



**PDC0100**  
Analog-DVI Converter

## Analog-Digital Converter

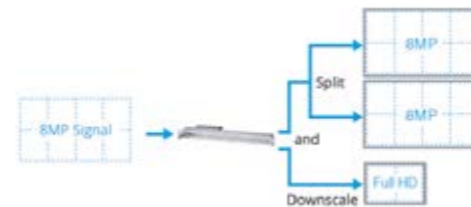
PDC0100 converts analog video signals to digital DVI format. The integrated Force Mode function supports unique analog input signals. With a range of accessories and high interconnectivity, the converter allows maximum flexibility for integration into existing systems.



**PDS0800-HD**  
DVI Splitter / Scaler

## Signal Splitter

By utilizing PDS0800-HD, signals coming from LMM56800 or LMM0802-HDM are repeated and doubled to connect two 8 megapixel monitors. The additional downscale output generates a Full HD representation of the content displayed on the large screen.



**TDL3600 / TDL2300**  
DVI Transmission Link

## Signal Transmission for a Long Distance

TDL enables transmission of high-quality video data of distances up to 36 meters with no loss in quality. Ethernet cable transmission allows robust handling and simple setup which easily runs through small conduits and holes.



# ACCESSORIES

## CONNECTION PARTS

### Signal Cables and Adapters

EIZO offers a variety of cables and adapters suitable for the signal inputs of the monitors.



### Power Cords

Country-specific power cords are available to match local requirements.

### SCC500 / SCC2500 / SCC3500

Camera cable (5 m / 25 m / 35 m) for SC431



### SCA02

Camera cable extension adapter for SC431.



### TDL Components

Different TDL transmitters and receivers, as well as TDL cables of different lengths, are offered in predefined link sets or may be ordered individually in accordance with specific application needs.



## ALIFE ACCESSORIES

### Network Components

For the compilation of a complete IP transmission solution, network switches and connection components are available.



## WALL MOUNTS AND STANDS

### Wall Mount FWM6300

Compatible with monitors from 43" to 55".



### Mounts for Alife

Various brackets allow easy and secure mounting of IP-transceivers on the image source, on the monitor or in a rack.



### VESA Adapter 400x200

For mounting to VESA 100x100 or 200x200 for EX4342 and EX4342-3D



## PROTECTION SCREEN

### FPP5510

Compatible with LL550W.



## GLASSES

### H3G02

3D glasses for EX3220-3D, EX3242-3D and EX4342-3D.



## FOOT SWITCH

### FS500

Compatible with MIR-1 (cable 5 m).



# SURGICAL PANEL



CuratOR Surgical Panel  
SP1-24



CuratOR Surgical Panel **4K**  
SP1-324K



CuratOR Surgical Panel **4K**  
SP1-434K



CuratOR Surgical Panel **4K**  
SP1-494K

<b>Model Variations</b>		SP1-24: without touchscreen SP1-24T: with touchscreen	SP1-324K: without touchscreen SP1-324KT: with touchscreen	SP1-434K: without touchscreen SP1-434KT: with touchscreen	SP1-494K: without touchscreen SP1-494KT: with touchscreen
<b>Housing</b>	Material	Powder-coated sheet steel	Powder-coated sheet steel	Powder-coated sheet steel	Powder-coated sheet steel
	Front	Combination of power coated stainless steel and anti-reflective safety glass (ESG)	Combination of power coated stainless steel and anti-reflective safety glass (ESG)	Combination of power coated stainless steel and anti-reflective safety glass (ESG)	Combination of power coated stainless steel and anti-reflective safety glass (ESG)
	Color	Available in every RAL color	Available in every RAL color	Available in every RAL color	Available in every RAL color
	Mounting Options	Flush mounting (optional: surface mounting)	Flush mounting (optional: surface mounting)	Flush mounting (optional: surface mounting)	Flush mounting (optional: surface mounting)
<b>Panel 1</b>	Size	24"	32"	43"	49"
	Diagonal	60.5 cm (16:9 aspect ratio)	80.0 cm (16:9 aspect ratio)	108.0 cm (16:9 aspect ratio)	123.2 cm (16:9 aspect ratio)
	Panel Type	Color TFT LCD Panel	Color TFT LCD Panel with DICOM® Preset	Color TFT LCD Panel with DICOM® Preset	Color TFT LCD Panel (IPS) with DICOM® Preset
	Native Resolution	1920 × 1080 (Full HD)	3840 × 2160 (UHD)	3840 × 2160 (UHD)	3840 × 2160 (UHD)
	Display Colors	16.7 million colors	1.07 billion colors	1.07 billion colors	1.07 billion colors
	Pixel Pitch	0.275 mm x 0.275 mm	0.182 mm x 0.182 mm	0.245 mm x 0.245 mm	0.280 mm x 0.280 mm
	Brightness (typical)	350 cd/m²	450 cd/m²	700 cd/m²	700 cd/m²
	Contrast Ratio (typical)	1000:1	1300:1	1000:1	1100:1
	Viewing Angles (H/V, maximum)	178°, 178°	178°, 178°	178°, 178°	178°, 178°
	Response Time (typical)	14 ms (Gray-to-Gray)	14 ms (Gray-to-Gray)	9 ms (Gray-to-Gray)	8,0 ms (Gray-to-Gray)
	Backlight	LED	LED	LED	LED
<b>Touchscreen</b>		Projected capacitive, multi-touch (SP1-24T only)	Projected capacitive, multi-touch (SP1-324KT only)	Projected capacitive, multi-touch (SP1-434KT only)	Projected capacitive, multi-touch (SP1-494KT only)
<b>IT Components</b> (expandable within the scope of the PC specifications)		Intel® Core™ i5 processor – 3.0 GHz, Intel chipset, 18 MB cache, 8 GB DDR3 RAM, SATA SSD, LAN RJ 45 – 10/100/1000 Base TX x 2	Intel Core i5 processor – 3.0 GHz, Intel chipset, 18 MB cache, 8 GB DDR3 RAM, SATA SSD, LAN RJ 45 – 10/100/1000 Base TX x 2	Intel Core i5 processor – 3.0 GHz, Intel chipset, 18 MB cache, 8 GB DDR3 RAM, SATA SSD, LAN RJ 45 – 10/100/1000 Base TX x 2	Intel Core i5 processor – 3.0 GHz, Intel chipset, 18 MB cache, 8 GB DDR3 RAM, SATA SSD, LAN RJ 45 – 10/100/1000 Base TX x 2
<b>Operating System</b>		Windows 10 Pro, Windows 11 Pro	Windows 10 Pro, Windows 11 Pro	Windows 10 Pro, Windows 11 Pro	Windows 10 Pro, Windows 11 Pro
<b>Keyboard/Mouse</b>		Anti-microbial medical silicone keyboard with integrated mouse storage (foldable), silicone mouse (visual 5 keys, laser mouse /IP65, occupies 1x USB)	Anti-microbial medical silicone keyboard with integrated mouse storage (foldable), silicone mouse (visual 5 keys, laser mouse /IP65, occupies 1x USB)	Anti-microbial medical silicone keyboard with integrated mouse storage (foldable), silicone mouse (visual 5 keys, laser mouse /IP65, occupies 1x USB)	Anti-microbial medical silicone keyboard with integrated mouse storage (foldable), silicone mouse (visual 5 keys, laser mouse /IP65, occupies 1x USB)
<b>Inputs</b> (front side)	USB	USB Type-A: 2.0, 3.0	USB Type-A: 2.0, 3.0	USB Type-A: 2.0, 3.0	USB Type-A: 2.0, 3.0
	Signal Inputs (optional, with VMbasic only)	-	DisplayPort, DVI-I Single Link, HDMI (4K@30Hz), HDMI (4K@60Hz) x 2	DisplayPort, DVI-I Single Link, HDMI (4K@30Hz), HDMI (4K@60Hz) x 2	DisplayPort, DVI-I Single Link, HDMI (4K@30Hz), HDMI (4K@60Hz) x 2
<b>Push Buttons</b> (front side)	Standard	Main switch, system switch	Main switch, system switch, LookUp table switch (DICOM normal, DICOM bright, Gamma 1.8, 2.0, 2.2, 2.4)	Main switch, system switch, LookUp table switch (DICOM normal, DICOM bright, Gamma 1.8, 2.0, 2.2, 2.4)	Main switch, system switch, LookUp table switch (DICOM normal, DICOM bright, Gamma 1.8, 2.0, 2.2, 2.4)
	VMbasic (optional)	-	Signal input switch (DisplayPort, DVI-I Single Link, HDMI (4K@30Hz), HDMI (4K@60Hz x 2), layout switch (PIP, PaP, LR, TB, Quadsplit, Single), rotate signal inputs with active layout	Signal input switch (DisplayPort, DVI-I Single Link, HDMI (4K@30Hz), HDMI (4K@60Hz x 2), layout switch (PIP, PaP, LR, TB, Quadsplit, Single), rotate signal inputs by keeping the active layout	Signal input switch (DisplayPort, DVI-I Single Link, HDMI (4K@30Hz), HDMI (4K@60Hz x 2), layout switch (PIP, PaP, LR, TB, Quadsplit, Single), rotate signal inputs by keeping the active layout
<b>Maximum Power Consumption</b>		157.7 W	190.0 W	220.0 W	265.0 W
<b>Power Requirements</b>		100–240 V/50–60 Hz/4–2 A	100–240 V/50–60 Hz/4–2 A	100–240 V/50–60 Hz/4–2 A	100–240 V/50–60 Hz/4–2 A
<b>Thermal Load</b>		567.7 kJ/h	684.0 kJ/h	792.0 kJ/h	954.0 kJ/h
<b>Net Weight</b>		appr. 45 kg	50 kg	70 kg	80 kg
<b>Certifications and Standards</b> (Please contact EIZO for the latest information)		CE/UKCA, IEC/EN 62368-1, IEC/EN 60601-1; IEC/EN 60601-1-2, RoHS, WEEE	CE/UKCA, IEC/EN 62368-1, IEC/EN 60601-1; IEC/EN 60601-1-2, RoHS, WEEE	CE/UKCA, IEC/EN 62368-1, IEC/EN 60601-1; IEC/EN 60601-1-2, RoHS, WEEE	CE/UKCA, IEC/EN 62368-1, IEC/EN 60601-1; IEC/EN 60601-1-2, RoHS, WEEE
<b>Dimensions (mm)</b>	Device (WxHxD)	850 x 625 x 120	1050 x 700 x 120	1300 x 800 x 120	1400 x 900 x 120
	Niche (WxHxD)	860 x 635 x 140	1060 x 710 x 140	1310 x 810 x 140	1410 x 910 x 140
	Masking Frame (WxH)	880 x 655	1080 x 730	1330 x 830	1430 x 930

# SURGICAL PANEL



CuratOR Surgical Panel **4K**  
SP1-554K



CuratOR Surgical Panel **4K**  
SP1-654K



CuratOR Surgical Panel  
SP2-24-24



CuratOR Surgical Panel **4K**  
SP2-24-494K



CuratOR Surgical Panel **4K**  
SP2-24-554K

<b>Model Variations</b>		SP1-554K: without touchscreen SP1-554KT: with touchscreen	SP1-654K: without touchscreen SP1-654KT: with touchscreen	SP2-24-24: without touchscreen SP2-24T-24: with touchscreen (24" left) SP2-24-24T: with touchscreen (24" right) SP2-24T-24T: with touchscreen (both 24")	SP2-24-494K: without touchscreen SP2-24T-494K: with touchscreen (24") SP2-24-494KT: with touchscreen (49") SP2-24T-494KT: with touchscreen (24", 49")	SP2-24-554K: without touchscreen SP2-24T-554K: with touchscreen (24") SP2-24-554KT: with touchscreen (55") SP2-24T-554KT: with touchscreen (24", 55")	
<b>Housing</b>	Material	Powder-coated sheet steel	Powder-coated sheet steel	Powder-coated sheet steel	Powder-coated sheet steel	Powder-coated sheet steel	
	Front	Combination of power coated stainless steel and anti-reflective safety glass (ESG)		Combination of power coated stainless steel and anti-reflective safety glass (ESG)		Combination of power coated stainless steel and anti-reflective safety glass (ESG)	
	Color	Available in every RAL color		Available in every RAL color		Available in every RAL color	
<b>Panel 1</b>	Mounting Options	Flush mounting (optional: surface mounting)		Flush mounting (optional: surface mounting)		Flush mounting (optional: surface mounting)	
	Size	55"	65"	24"	24"	24"	
	Diagonal	138.8 cm (16:9 aspect ratio)	163.9 cm (16:9 aspect ratio)	60.5 cm (16:9 aspect ratio)	60.5 cm (16:9 aspect ratio)	60.5 cm (16:9 aspect ratio)	
	Panel Type	Color TFT LCD Panel with DICOM® Preset		Color TFT LCD Panel		Color TFT LCD Panel	
	Native Resolution	3840 × 2160 (UHD)		1920 × 1080 (Full HD)		1920 × 1080 (Full HD)	
	Display Colors	1.07 billion colors		16.7 million colors		16.7 million colors	
	Pixel Pitch	0.315 mm x 0.315 mm		0.275 mm x 0.275 mm		0.275 mm x 0.275 mm	
	Brightness (typical)	700 cd/m²		350 cd/m²		350 cd/m²	
	Contrast Ratio (typical)	1100:1		1000:1		1000:1	
	Viewing Angles (H/V, maximum)	178°, 178°		178°, 178°		178°, 178°	
	Response Time (typical)	8.0 ms (Gray-to-Gray)		8.0 ms (Gray-to-Gray)		14 ms (Gray-to-Gray)	
	Backlight	LED		LED		LED	
	<b>Panel 2</b>	Size	-	-	24"	49"	55"
Diagonal		-	-	60.5 cm (16:9 aspect ratio)	123.2 cm (16:9 aspect ratio)	138.8 cm (16:9 aspect ratio)	
Panel Type		-	-	Color TFT LCD Panel	Color TFT LCD Panel (IPS) with DICOM® Preset	Color TFT LCD Panel with DICOM® Preset	
Native Resolution		-	-	1920 × 1080 (Full HD)	3840 × 2160 (UHD)	3840 × 2160 (UHD)	
Display Colors		-	-	16.7 million colors	1.07 billion colors	1.07 billion colors	
Pixel Pitch		-	-	0.275 mm x 0.275 mm	0.280 mm x 0.280 mm	0.315 mm x 0.315 mm	
Brightness (typical)		-	-	350 cd/m²	700 cd/m²	700 cd/m²	
Contrast Ratio (typical)		-	-	1000:1	1100:1	1100:1	
Viewing Angles (H/V, maximum)		-	-	178°, 178°	178°, 178°	178°, 178°	
Response Time (typical)		-	-	14 ms (Grey to Grey)	8.0 ms (Gray-to-Gray)	8.0 ms (Gray-to-Gray)	
Backlight	-	-	LED	LED	LED		
<b>Touchscreen</b>	Projected capacitive, multi-touch (SP1-554KT only)		Projected capacitive, multi-touch (SP1-654KT only)		Projected capacitive, multi-touch (SP2-24T-494K, SP2-24-494KT, SP2-24T-494KT only)		
<b>IT Components</b> (expandable within the scope of the PC specifications)	Intel® Core™ i5 processor – 3.0 GHz, Intel chipset, 18 MB cache, 8 GB DDR3 RAM, SATA SSD, LAN RJ 45–10/100/1000 Base TX x 2		Intel Core i5 processor – 3.0 GHz, Intel chipset, 18 MB cache, 8 GB DDR3 RAM, SATA SSD, LAN RJ 45–10/100/1000 Base TX x 2		Intel Core i5 processor – 3.0 GHz, Intel chipset, 18 MB cache, 8 GB DDR3 RAM, SATA SSD, LAN RJ 45–10/100/1000 Base TX x 2		
<b>Operating System</b>	Windows 10 Pro, Windows 11 Pro		Windows 10 Pro, Windows 11 Pro		Windows 10 Pro, Windows 11 Pro		
<b>Keyboard/Mouse</b>	Anti-microbial medical silicone keyboard with integrated mouse storage (foldable), silicone mouse (visual 5 keys, laser mouse /IP65, occupies 1x USB)		Anti-microbial medical silicone keyboard with integrated mouse storage (foldable), silicone mouse (visual 5 keys, laser mouse /IP65, occupies 1x USB)		Anti-microbial medical silicone keyboard with integrated mouse storage (foldable), silicone mouse (visual 5 keys, laser mouse /IP65, occupies 1x USB)		
<b>Inputs</b> (front side)	USB	USB Type-A: 2.0, 3.0		USB Type-A: 2.0, 3.0		USB Type-A: 2.0, 3.0	
	Signal inputs (optional, with VMbasic only)	DisplayPort, DVI-I Single Link, HDMI (4K@30Hz), HDMI (4K@60Hz) x 2		-		DisplayPort, DVI-I Single Link, HDMI (4K@30Hz), HDMI (4K@60Hz) x 2	
<b>Push Buttons</b> (front side)	Standard	Main switch, system switch, LookUp table switch (DICOM normal, DICOM bright, Gamma 1.8, 2.0, 2.2, 2.4),		Main switch, system switch		Main switch, system switch, LookUp table switch (DICOM normal, DICOM bright, Gamma 1.8, 2.0, 2.2, 2.4),	
	VMbasic (optional)	Signal input switch (DisplayPort, DVI-I Single Link, HDMI (4K@30Hz), HDMI (4K@60Hz x 2), layout switch (PIP, PaP, LR, TB, Quadsplit, Single), rotate signal inputs by keeping the active layout		-		Signal input switch (DisplayPort, DVI-I Single Link, HDMI (4K@30Hz), HDMI (4K@60Hz x 2), layout switch (PIP, PaP, LR, TB, Quadsplit, Single), rotate signal inputs by keeping the active layout	
<b>Maximum Power Consumption</b>	275.0 W		287.0 W		290.0 W		
<b>Power Requirements</b>	100–240 V/50–60 Hz/4–2 A		100–240 V/50–60 Hz/4–2 A		100–240 V/50–60 Hz/4–2 A		
<b>Thermal Load</b>	990.0 kJ/h		1033.2 kJ/h		1044.0 kJ/h		
<b>Net Weight</b>	85 kg		90 kg		105 kg		
<b>Certifications and Standards</b> (Please contact EIZO for the latest information.)	CE/UKCA, IEC/EN 62368-1, IEC/EN 60601-1; IEC/EN 60601-1-2, RoHS, WEEE		CE/UKCA, IEC/EN 62368-1, IEC/EN 60601-1; IEC/EN 60601-1-2, RoHS, WEEE		CE/UKCA, IEC/EN 62368-1, IEC/EN 60601-1; IEC/EN 60601-1-2, RoHS, WEEE		
<b>Dimensions (mm)</b>	Device (WxHxD)	1600 x 1000 x 120	1800 x 1300 x 120	1400 x 625 x 120	2000 x 900 x 120	2200 x 1000 x 120	
	Niche (WxHxD)	1610 x 1010 x 140	1810 x 1310 x 140	1410 x 635 x 140	2010 x 910 x 140	2210 x 1010 x 140	
	Masking Frame (WxH)	1830 x 1030	1830 x 1330	1430 x 655	2030 x 930	2230 x 1030	

SPECIFICATIONS

# MONITORS



CuratOR EX2721 **27" WIDE**



CuratOR EX2742 **27" WIDE 4K**



CuratOR EX3220 **31.5" WIDE**



CuratOR EX3220-3D **31.5" WIDE 3D**



CuratOR EX3242 **32" WIDE 4K**



CuratOR EX3242-3D **32" WIDE 4K 3D**

Model Variations	EX2721-WT: without stand, white	EX2742-WT: without stand, white	EX3220-WT: without stand, white	EX3220-3D-WT: without stand, white	EX3242-WT: without stand, white	EX3242-3D-WT: without stand, white	
Panel	Type	IPS, protective glass	IPS, protective glass, optical bonding	IPS, protective screen	IPS, protective glass, optical bonding	IPS, protective glass, optical bonding	
	Backlight	LED	LED	LED	LED	LED	
	Size	27.0" (68.6 cm)	27" (68.4 cm)	31.5" (80.1 cm)	31.5" (80.1 cm)	32" (81.3 cm)	32" (81.3 cm)
	Native Resolution	1920 x 1080 (16:9 aspect ratio)	3840 x 2160 (16:9 aspect ratio)	1920 x 1080 (16:9 aspect ratio)	1920 x 1080 (16:9 aspect ratio)	3840 x 2160 (16:9 aspect ratio)	3840 x 2160 (16:9 aspect ratio)
	Viewable Image Size (H x V)	598 x 336 mm	596.2 x 335.3 mm	698 x 393 mm	698 x 393 mm	708 x 399 mm	708 x 399 mm
	Pixel Pitch (H x V)	0.311 x 0.311 mm	0.155 x 0.155 mm	0.364 x 0.364 mm	0.364 x 0.364 mm	0.185 x 0.185 mm	0.185 x 0.185 mm
	Display Colors	10-bit colors (SDI): 1.07 billion colors (maximum), 8-bit colors: 16.77 million colors	10-bit colors (SDI / DisplayPort / HDMI): 1.07 billion (maximum) colors 8-bit colors: 16.77 million colors	10-bit colors (SDI): 1.07 billion colors (maximum), 8-bit colors: 16.77 million colors	10-bit colors (SDI): 1.07 billion colors (maximum), 8-bit colors: 16.77 million colors	10-bit colors (SDI / DisplayPort / HDMI): 1.07 billion colors (maximum) 8-bit colors: 16.77 million colors	10-bit colors (SDI / DisplayPort / HDMI): 1.07 billion colors (maximum) 8-bit colors: 16.77 million colors
	Viewing Angles (H/V, typical)	178°/178°	178°/178°	178°/178°	178°/178° (2D mode)	178°/178°	178°/178° (2D mode)
	Brightness (typical)	900 cd/m <sup>2</sup>	820 cd/m <sup>2</sup>	650 cd/m <sup>2</sup>	700 cd/m <sup>2</sup>	850 cd/m <sup>2</sup>	850 cd/m <sup>2</sup>
	Contrast Ratio (typical)	1000:1	2000:1	1400:1	1200:1	1800:1	1500:1
	Response Time (typical)	14 ms (black-white-black)	22 ms (black-white-black)	16 ms (black-white-black)	8 ms (gray-to-gray)	20 ms (black-white-black)	20 ms (black-white-black)
	Color Gamut (typical)	sRGB	BT.2020 emulation	sRGB	sRGB	BT.2020 emulation	BT.2020 emulation
Video Signals	Input Terminals	BNC (3G-SDI), DVI-D x 2 (HDCP 1.4), D-Sub 15 pin (mini), S-Video, BNC (Composite)	DisplayPort (HDCP 1.3), HDMI (HDCP 1.4), BNC (12G-SDI), BNC (3G-SDI), DVI-D (Single Link, HDCP 1.4)	BNC (3G-SDI) x 2, DVI-D x 2 (HDCP 1.4), D-Sub 15 pin (mini), BNC (RGB C-Sync or Component), S-Video, BNC (Composite)	BNC (3G-SDI) x 2, DVI-D x 2 (HDCP 1.4), D-Sub 15 pin (mini), BNC (RGB C-Sync or Component), S-Video, BNC (Composite)	DisplayPort (HDCP 1.3), HDMI (HDCP 2.2/1.4), BNC (12G-SDI), BNC (3G-SDI), DVI-D (HDCP 1.4)	DisplayPort (HDCP 1.3), HDMI (HDCP 1.4), BNC (12G-SDI) x 2, DVI-D (HDCP 1.4)
	Output Terminals	BNC (3G-SDI), DVI-D, S-Video, BNC (Composite)	DisplayPort, BNC (12G-SDI), DVI-D	BNC (3G-SDI) x 2, DVI-D, BNC (RGB C-Sync or Component), S-Video, BNC (Composite)	BNC (3G-SDI) x 2, DVI-D, BNC (RGB C-Sync or Component), S-Video, BNC (Composite)	DisplayPort, BNC (12G-SDI), DVI-D	DisplayPort, BNC (12G-SDI), DVI-D
	Digital Scanning Frequency (H/V)	15-75 kHz/24-60 Hz	18-136 kHz/23-71 Hz	15-75 kHz/24-60 Hz	15-75 kHz/24-60 Hz	18-136 kHz/23-71 Hz	18-136 kHz/23-71 Hz
	Analog Scanning Frequency (H/V)	15-80 kHz/24-85 Hz	-	15-80 kHz/24-85 Hz	15-80 kHz/24-85 Hz	-	-
	Sync Formats	Separate, Composite, Sync on green	-	Separate, Composite, Sync on green	Separate, Composite, Sync on green	-	-
3D Signal Format	-	-	-	Full HD: Side by Side, Line by Line, Top and Bottom, SIMUL (Level-B)	-	4K: Side by Side, Line by Line, Top and Bottom, SIMUL Full HD: Side by Side, Line by Line, Top and Bottom, SIMUL (Level-B)	
Power	Power Input	AC 100-240 V: 50/60 Hz	AC 100-240 V: 50/60 Hz	AC 100-240 V: 50/60 Hz	AC 100-240 V: 50/60 Hz	AC 100-240 V: 50/60 Hz	
	Maximum Power Consumption	79 W	126 W	97 W	106 W	199 W	205 W
	Power Output	DC 5V, 1A	DC 5V, 2A	DC 5V, 1A	DC 5V, 1A	DC 5V, 2A	DC 5V, 2A
Features & Functions	Simultaneous Display	Picture-by-Picture (2 PbyP), Picture-in-Picture (PinP)	Picture-by-Picture (2 PbyP), Picture-in-Picture (PinP)	Picture-by-Picture (2 PbyP), Picture-in-Picture (PinP)	Picture-by-Picture (2 PbyP), Picture-in-Picture (PinP)	Picture-by-Picture (2 PbyP), Picture-in-Picture (PinP)	Picture-by-Picture (2 PbyP), Picture-in-Picture (PinP)
	OSD Languages	English, German, French, Italian, Spanish, Swedish, Japanese, Simplified Chinese, Traditional Chinese	English, German, French, Spanish, Italian, Swedish, Japanese, Simplified Chinese, Traditional Chinese, Russian, Portuguese	English, German, French, Italian, Spanish, Swedish, Japanese, Simplified Chinese, Traditional Chinese	English, German, French, Italian, Spanish, Swedish, Japanese, Simplified Chinese, Traditional Chinese	English, German, French, Spanish, Italian, Swedish, Japanese, Simplified Chinese, Traditional Chinese, Russian, Portuguese	English, German, French, Spanish, Italian, Swedish, Japanese, Simplified Chinese, Traditional Chinese, Russian, Portuguese
	Communication Interface	RS-232C, GPI	RS-232C, GPI	RS-232C, GPI	RS-232C	RS-232C	RS-232C
	Others	180° rotation, mirroring	180° rotation, mirroring	180° rotation, mirroring	180° rotation, mirroring	180° rotation, mirroring	180° rotation, mirroring
Physical Specifications	Net Weight	8.5 kg	8.1 kg	9.9 kg	10.8 kg	13.2 kg	13.6 kg
	Hole Spacing (VESA Standard)	100 x 100 mm, M4, depth 5-9 mm	100 x 100 mm, M4, depth 5-9 mm	200 x 200 mm, M6, depth 7-10 mm/100 x 100 mm, M4, depth 5-9 mm	200 x 200 mm, M6, depth 7-10 mm/100 x 100 mm, M4, depth 5-9 mm	200 x 200 mm, M6, depth 7-12 mm/100 x 100 mm, M4, depth 7-11 mm	200 x 200 mm, M6, depth 7-12 mm/100 x 100 mm, M4, depth 7-11 mm
Degree of Protection	IP45 (front), IP32 (rear)	IP45 (front), IP32 (rear)	IP45 (front), IP32 (rear)	IP45 (front), IP32 (rear)	IP45 (front), IP32 (rear)	IP45 (front), IP32 (rear)	
Certifications & Standards (Please contact EIZO for the latest information.)	CE/UKCA (Medical Device), cTUVus, IEC/EN60601-1, VCCI-A, FCC-A, CAN ICES (A), RCM, RoHS, China RoHS, WEEE, CCC, EAC, BIS	CE/UKCA (Medical Device), cTUVus, IEC/EN60601-1, VCCI-B, FCC-B, CAN ICES (B), RCM, RoHS, China RoHS, WEEE, CCC, BIS	CE/UKCA (Medical Device), cTUVus, IEC/EN60601-1, VCCI-A, FCC-A, CAN ICES (A), RCM, RoHS, China RoHS, WEEE, CCC, EAC, BIS	CE/UKCA (Medical Device), cTUVus, IEC/EN60601-1, VCCI-A, FCC-A, CAN ICES (A), RCM, RoHS, China RoHS, WEEE, CCC, EAC, BIS	CE/UKCA (Medical Device), cTUVus, IEC/EN60601-1, VCCI-A, FCC-A, CAN ICES (A), RCM, RoHS, China RoHS, WEEE, CCC, EAC, BIS	CE/UKCA (Medical Device), cTUVus, IEC/EN60601-1, VCCI-A, FCC-A, CAN ICES (A), RCM, RoHS, China RoHS, WEEE, CCC, EAC, BIS	
FDA	Class I	Class II	Class I	Class I	Class I	Class I	
Supplied Accessories (May vary by country. Please contact EIZO for details.)	AC power cord, AC adapter, screws for VESA adapter x 4, cable cover, Utility Disk (PDF installation manual), instructions for use	AC power cord, AC adapter, screws for VESA adapter x 4, cable cover, Utility Disk (instructions for use, installation manual)	AC power cord, AC adapter, screws for VESA adapter x 4, cable cover, Utility Disk (PDF installation manual), instructions for use	AC power cord, AC adapter, 3D fogless polarized glasses x 3, screws for VESA adapter x 8, cable cover, Utility Disk (PDF installation manual), instructions for use	AC power cord, AC adapter, screws for VESA adapter x 8, cable cover, Utility Disk (PDF installation manual), instructions for use	AC power cord, AC adapter, 3D fogless polarized glasses x 3, screws for VESA adapter x 8, cable cover, Utility Disk (PDF installation manual), instructions for use	
Dimensions (Unit: mm)							

SPECIFICATIONS

# MONITORS



CuratOR<sup>®</sup>  
EX4342 **43" WIDE** 4K

CuratOR<sup>®</sup>  
EX4342-3D **43" WIDE** 4K 3D

CuratOR<sup>®</sup>  
EX4942 **49" WIDE** 4K

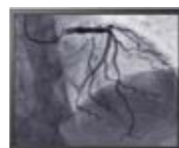
CuratOR<sup>®</sup>  
EX5542 **55" WIDE** 4K

Model Variations		EX4342: without stand, white	EX4342-3D: without stand, white	EX4942: without stand, white	EX5542: without stand, white
Panel	Type	IPS, protective glass	IPS, protective glass	IPS, protective glass	IPS, protective glass
	Backlight	LED	LED	LED	LED
	Size	43" (109.2 cm)	43" (109.2 cm)	49" (124.5 cm)	55" (139.7 cm)
	Native Resolution	3840 x 2160 (16:9 aspect ratio)	3840 x 2160 (16:9 aspect ratio)	3840 x 2160 (16:9 aspect ratio)	3840 x 2160 (16:9 aspect ratio)
	Viewable Image Size (H x V)	941.2 x 529.4 mm	941.2 x 529.4 mm	1073.8 x 604 mm	1209.6 x 680.4 mm
	Pixel Pitch (H x V)	0.2451 x 0.2451 mm	0.2451 x 0.2451 mm	0.279 x 0.279 mm	0.315 x 0.315 mm
	Display Colors	10-bit colors (SDI / DisplayPort / HDMI): 1.07 billion colors (maximum) 8-bit colors: 16.77 million colors	10-bit colors (SDI / DisplayPort / HDMI): 1.07 billion colors (maximum) 8-bit colors: 16.77 million colors	10-bit colors (SDI / DisplayPort / HDMI): 1.07 billion colors (maximum) 8-bit colors: 16.77 million colors	10-bit colors (SDI / DisplayPort / HDMI): 1.07 billion colors (maximum) 8-bit colors: 16.77 million colors
	Viewing Angles (H/V, typical)	178°/178°	178°/178°	178°/178°	178°/178°
	Brightness (typical)	700 cd/m <sup>2</sup>	700 cd/m <sup>2</sup>	700 cd/m <sup>2</sup>	700 cd/m <sup>2</sup>
	Contrast Ratio (typical)	1000:1	1000:1	1100:1	1100:1
Response Time (typical)	8 ms (gray-to-gray)	8 ms (gray-to-gray)	8 ms (gray-to-gray)	8 ms (gray-to-gray)	
Color Gamut (typical)	BT.2020 emulation	BT.2020 emulation	BT.2020 emulation	BT.2020 emulation	
Video Signals	Input Terminals	DisplayPort, HDMI, BNC (3G-SDI), BNC (12G-SDI), DVI-D	DisplayPort, HDMI, BNC (3G-SDI), BNC (12G-SDI), DVI-D	DisplayPort, HDMI, BNC (3G-SDI), BNC (12G-SDI), DVI-D	DisplayPort, HDMI, BNC (3G-SDI), BNC (12G-SDI), DVI-D
	Output Terminals	DisplayPort, BNC (12G-SDI), DVI-D	DisplayPort, BNC (12G-SDI), DVI-D	DisplayPort, BNC (12G-SDI), DVI-D	DisplayPort, BNC (12G-SDI), DVI-D
	3D Signal Format	-	4K: Side by Side, Line by Line Full HD: Side by Side, Line by Line, SIMUL (Level-B)	-	-
Power	Power Input	AC adapter input: 100-240 V: 50/60 Hz Monitor input: DC 48 V, 3.0 A	AC adapter input: 100-240 V: 50/60 Hz Monitor input: DC 48 V, 3.0 A	100-240 V: 50/60 Hz	100-240 V: 50/60 Hz
	Maximum Power Consumption	144 W	144 W	160 W	170 W
	Power Output	DC 5V, 2A	DC 5V, 2A	DC 5V, 2A	DC 5V, 2A
Features & Functions	Simultaneous Display	Picture-by-Picture (2 PbyP), Picture-in-Picture (PinP)	Picture-by-Picture (2 PbyP), Picture-in-Picture (PinP)	Picture-by-Picture (2 PbyP), Picture-in-Picture (PinP)	Picture-by-Picture (2 PbyP), Picture-in-Picture (PinP)
	OSD Languages	English, German, French, Spanish, Italian, Swedish, Japanese, Simplified Chinese, Traditional Chinese, Russian, Portuguese	English, German, French, Spanish, Italian, Swedish, Japanese, Simplified Chinese, Traditional Chinese, Russian, Portuguese	English, German, French, Spanish, Italian, Swedish, Japanese, Simplified Chinese, Traditional Chinese, Russian, Portuguese	English, German, French, Spanish, Italian, Swedish, Japanese, Simplified Chinese, Traditional Chinese, Russian, Portuguese
	Communication Interface	RS-232C	RS-232C	RS-232C	RS-232C
	Others	Auto Input Detection, Gamma switch, color temperature switch	Auto Input Detection, Gamma switch, color temperature switch	Auto Input Detection, Gamma switch, color temperature switch	Auto Input Detection, Gamma switch, color temperature switch
Physical Specifications	Net Weight	16.4 kg	17.6 kg	25 kg	29.3 kg
	Hole Spacing (VESA Standard)	400 x 200 mm, M8, depth 8-15 mm	400 x 200 mm, M8, depth 8-15 mm	400 x 200 mm, M8, depth 11-16 mm	400 x 200 mm, M8, depth 11-16 mm
Schutzart		IP45 (front), IP32 (rear)	IP45 (front), IP32 (rear)	IP45 (front), IP32 (rear)	IP45 (front), IP32 (rear)
Certifications & Standards (Please contact EIZO for the latest information.)		CE/UKCA (Medical Device), ANSI/AAMI ES60601-1, CAN/CSA-C22.2 No. 60601-1, IEC/EN 60601-1, FCC-A, RoHS, China RoHS, WEEE, CCC, BIS	CE/UKCA (Medical Device), ANSI/AAMI ES60601-1, CAN/CSA-C22.2 No. 60601-1, IEC/EN 60601-1, FCC-A, RoHS, China RoHS, WEEE, CCC, BIS	CE/UKCA (Medical Device), ANSI/AAMI ES60601-1, CAN/CSA-C22.2 No. 60601-1, IEC/EN 60601-1, VCCI-B, FCC-B, CAN ICES-3(B), RCM, RoHS, China RoHS, WEEE	CE/UKCA (Medical Device), ANSI/AAMI ES60601-1, CAN/CSA-C22.2 No. 60601-1, IEC/EN 60601-1, VCCI-B, FCC-B, CAN ICES-3(B), RCM, RoHS, China RoHS, WEEE, CCC
FDA		Class I	Class I	Class I	Class I
Supplied Accessories (May vary by country. Please contact EIZO for details.)		AC power adapter, cable cover, monitor attachment screws x 4, cable tie x 2	AC power adapter, 3D fogless polarized glasses x 3, cable cover, monitor attachment screws x 4, cable tie x 2	Cable cover, monitor attachment screws x 4, cable tie x 2	Cable cover, monitor attachment screws x 4, cable tie x 2
Abmessungen (mm)					

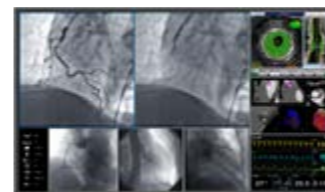
# MONITORS



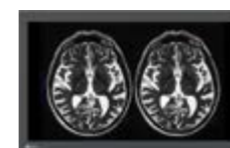
CuratOR LX1910 **19"**



CuratOR LS1910 **19"**



CuratOR LL550W **54.6" WIDE** 4K



CuratOR LX3240-MR **31.5" WIDE** 4K



CuratOR LX2420-T **23.8" WIDE**

Model Variations	LX1910: without stand, black LX1910-S: with stand, black	LS1910: without stand, black LS1910-S: with stand, black	LL550W: without stand, black	LX3240-MR: without stand, black	LX2420-T: without stand, black LX2420-ST: with reclining stand, black	
Panel	Type	IPS like	IPS	IPS	IPS	
	Backlight	LED	LED	LED	LED	
	Size	19" (48.3 cm)	19" (48.3 cm)	54.6" (139 cm)	31.5" (80 cm)	23.8" (60.5 cm)
	Native Resolution	1280 x 1024 (5:4 aspect ratio)	1280 x 1024 (5:4 aspect ratio)	3840 x 2160 (16:9 aspect ratio)	3840 x 2160 (16:9 aspect ratio)	1920 x 1080 (16:9 aspect ratio)
	Viewable Image Size (H x V)	376.3 x 301.0 mm	376.3 x 301.0 mm	1210 x 680 mm	697.3 x 392.2 mm	527 x 296.5 mm
	Pixel Pitch (H x V)	0.294 x 0.294 mm	0.294 x 0.294 mm	0.315 x 0.315 mm	0.181 x 0.181 mm	0.275 x 0.275 mm
	Display Colors	8-bit colors: 16.77 million colors	8-bit colors: 16.77 million colors	10-bit colors: 1.07 billion colors	10-bit colors: 1.07 billion colors	8-bit colors: 16.77 million colors
	Viewing Angles (H / V, typical)	178° / 178°	178°/178°	178°/178°	178°/178°	178°/178°
	Brightness (typical)	700 cd/m²	330 cd/m²	700 cd/m²	1000 cd/m²	600 cd/m²
	Recommended Brightness for Calibration	400 cd/m²	250 cd/m²	400 cd/m²	400 cd/m²	-
	Contrast Ratio (typical)	1000:1	1000:1	1100:1	1300:1	1000:1
	Response Time (typical)	13 ms rising, 12 ms falling	13 ms rising, 12 ms falling	8 ms (midtone)	14 ms (midtone)	14 ms (midtone)
	Color Gamut (typical)	-	-	86 % DCI	sRGB	-
Video Signals	Input Terminals	DisplayPort, DVI-I (digital and analog RGBHV)	DisplayPort, DVI-I (digital and analog RGBHV)	DVI-D (dual link) x 2	DisplayPort (4K UHD), DisplayPort (Full HD), HDMI (DVI-Signal Full HD) x 2	DisplayPort, DVI-I (digital and analog RGBHV)
	Digital Scanning Frequency (H / V)	30-100 kHz/50-85 Hz	30-80 kHz/60-75 Hz	125-135.87 kHz/59.0-60.72 Hz	131.3 kHz / 60 Hz	30-100 kHz/50-85 Hz
	Analog Scanning Frequency (H / V)	30-80 kHz/50-85 Hz	30-100 kHz/50-85 Hz	-	-	30-100 kHz/50-85 Hz
	Sync Formats	Separate, Composite, Sync on green	Separate, Composite, Sync on green	-	-	Separate, Composite, Sync on green
USB	Upstream	USB 2.0: Type-B	USB 2.0: Type-B	-	USB 2.0: Type-B	USB 2.0: Type-B
	Downstream	USB 2.0: Type-A	USB 2.0: Type-A	-	USB 2.0: Type-A x 2	USB 2.0: Type-A
Touch Panel	Maximum Touch Points	-	-	-	-	Projected Capacitive
	Surface Treatment	-	-	-	-	10
	Power	-	-	-	-	Anti-glare (AG80), anti-fingerprint coating
Power	Power Input	AC 100-240 V: 50/60 Hz	AC 100-240 V: 50/60 Hz	AC 100-240 V: 50/60 Hz	AC adapter input: 100-240 V: 50/60 Hz Monitor: 24 VDC, 6 A	AC 100-240 V: 50/60 Hz
	Maximum Power Consumption	45 W	58 W	170 W	155 W	46 W
	Power Save Mode	Less than 2 W	Less than 10 W	Less than 30 W	20 W (DMPM mode)	Less than 2 W (Touch On) Less than 1 W (Touch Off)
	Power Management	Digital: DVI DMPM, Analog: VESA DPM	Digital: DVI DMPM, Analog: VESA DPM	DVI DMPM	DMPM	Digital: DVI DMPM Analog: VESA DPMS
Power Output	DC 5V, 1A (Hirose)	DC 5V, 1A (Hirose)	DC 5V, 1A (Hirose)	DC 5V, 1A (Hirose)	DC 5V, 1A (Hirose)	
Sensor	Backlight Sensor	Backlight Sensor	Backlight Sensor	Backlight Sensor	-	
Features & Functions	OSD Languages	English, German	English, German	-	English	-
	Others	Prioritised input (DVI-A) for emergency signal	Prioritised input (DVI-A) for emergency signal	-	Cal-Switch, resistance to magnetic fields up to 100 mT	-
Physical Specifications	Protective Screen	-	-	-	-	Hardness 7H
	Physical Specifications	LX1910: 4.3 kg LX1910-S: 6.1 kg	LS1910: 4.3 kg LS1910-S: 6.1 kg	38 kg	17.2 kg	6.0 kg (LX2420-T) 6.2 kg (LX2420-ST)
	Hole Spacing (VESA Standard)	100 x 100 mm, M4, depth 5-10 mm	100 x 100 mm, M4, depth 5-10 mm	400 x 400 mm, M8, depth 16-20 mm	100 x 100 mm and 200 x 100, M4, depth 5-10 mm	100 x 100 mm, M4, depth 10 mm
Degree of Protection	IP20	IP20	IP20	IP20	IP20	
Certifications & Standards	CE/UKCA (Medical Device), IEC/EN60601-1, CAN/CSA C22.2 No. 60601-1, ANSI/AAMI ES60601-1, EN60601-1-2 Class B, FCC-B, RoHS, China RoHS, WEEE, CCC, BIS	CE/UKCA (Medical Device), IEC/EN60601-1, CAN/CSA C22.2 No. 60601-1, ANSI/AAMI ES60601-1, EN60601-1-2 Class B, FCC-B, RoHS, WEEE, CCC, BIS	CE/UKCA (Medical Device), IEC/EN60601-1, CAN/CSA C22.2 No. 60601-1, ANSI/AAMI 60601-1, EN60601-1-2 Class B, FCC-B, RCM, RoHS, China RoHS, WEEE, CCC, BIS	CE/UKCA (Medical Device), IEC/EN60601-1, CAN/CSA C22.2 No. 60601-1, ANSI/AAMI ES60601-1, EN60601-1-2 Class B, FCC-B, RoHS, WEEE	CE/UKCA (Medical Device), IEC/EN60601-1, CSA-C22.2 No. 60601-1-14 +A2:22 / AAMI ES60601-1:2005 (R)2012 + A2:2021, EN60601-1-2 Class B, FCC-B, RoHS, China RoHS, WEEE, CCC, BIS	
FDA	-	-	Class II	-	-	
Supplied Accessories	Adapter (D-Sub-DVI), adapter (BNC-D-Sub)	Adapter (D-Sub-DVI), adapter (BNC-D-Sub)	Dual link signal cable (DVI-D-DVI-D) x 2	AC adapter + cable (15 m)	DVI cable, DisplayPort cable, USB cable	
Abmessungen (mm)						

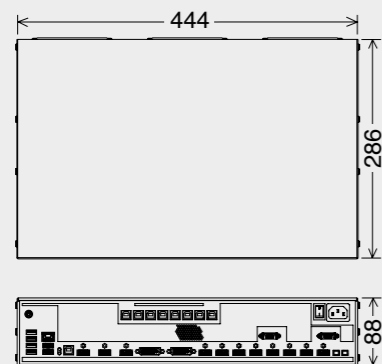
# VIDEO-MANAGEMENT



**LMM0802-HDM**  
Large Monitor Manager

<b>Cabinet Color</b>	Black
<b>Input Terminals</b>	HDMI connectors (DVI signals only) x 8, 8 simultaneous visible inputs (in 16 windows maximum)
<b>Input Performance</b>	DVI-D (single link), 1920 x 1200 maximum, 60 Hz or 2048 x 1536, 30 Hz (165 MHz pixelclock maximum, horizontal size 2048 maximum)
<b>Output Terminals</b>	DVI-D (dual link) x 2, HDMI x 2, HDMI (DVI single link signals, scaler output)
<b>Output Performance</b>	<b>Single Workspace</b> (all outputs with same picture content): SMP: DVI-DL x 2 [Monitor 1/2] (1920 x 2160, 60 Hz) equate to 3840 x 2160, 60 Hz, HDMI [Monitor 5] (3840 x 2160, 60 Hz), HDMI [Monitor 4] (freely scalable up to 3840 x 2160, 60 Hz), HDMI [Monitor 3] (firmly scaled to 1920 x 1080, 60 Hz) or 8MP: DVI-DL x 2 [Monitor 1/2] (2048 x 2160, 60 Hz) equate to 4096 x 2160, 60 Hz, HDMI [Monitor 5] (4096 x 2160, 60 Hz), HDMI [Monitor 4] (freely scalable up to 4096 x 2160, 60 Hz) <b>Dual Workspace</b> (two outputs each with same picture content): DVI-DL [Monitor 1] (2560 x 1600, 60 Hz or 2560 x 1440, 60 Hz), HDMI [Monitor 5] (same resolution as [Monitor 1]), DVI-DL [Monitor 2] (same resolution as [Monitor 1]), HDMI [Monitor 4] (same resolution as [Monitor 1]), Monitor 5 duplicates Monitor 1, Monitor 4 duplicates Monitor 2
<b>Operation with Extron DXP 1616 HD 4K matrix*</b>	Input Terminals: HDMI x 20 (max.) Input Performance: Additional inputs: up to 4K (4096 x 2160, 60 Hz) Output Terminals: HDMI x 16 (max.) Output Performance: Additional outputs Extron DXP 1616 HD 4K matrix: up to 4K (4096 x 2160, 60 Hz)
<b>Communication Connector</b>	Ethernet (RJ45)
<b>USB Ports</b>	Upstream: USB 2.0: type-B x 8 (for control of video applications on PCs) Downstream: USB 2.0: type-A x 6 (e.g. for keyboard, mouse)
<b>Power</b>	Power Requirements: AC 100-120 V, 200-240 V: 50/60 Hz Power Consumption: LMM0802-HDM: 110 W (including external load of 40 W), Extron DXP 1616 HD 4K matrix: 50 W (max.)
<b>OSD Languages</b>	English, German, French, Japanese, Chinese
<b>Physical Specification</b>	Net Weight: LMM0802-HDM: 5.3 kg, Extron DXP 1616 HD 4K matrix: 3.6 kg Mechanical Installation: LMM0802-HDM: 19" rack design, 2 RU Extron DXP 1616 HD 4K matrix: 2 RU
<b>Degree of Protection</b>	IP20
<b>Controls and Status</b>	Graphical user interface and software control interface for operating, status and diagnosis, LED indicators for hardware status x 2
<b>Certifications and Standards</b> (Please contact EIZO for the latest information)	CE/UKCA, IEC/EN60601-1, CAN/CSA-C22.2 No. 60601-1, ANSI/AAMI E60601-1, IEC/EN 62368-1, CAN/CSA C22.2 No. 62368-1:2014 / UL62368:2014, EN55032 Class B, RoHS, WEEE, CCC
<b>Supplied Accessories</b> (May vary by country. Please contact EIZO for details)	LMM0802-HDM: Adapter cables (HDMI - DVI) x 8, mounting brackets, screws x 2 Extron DXP 1616 HD 4K Matrix: AC power cord (eu) and manual, adapter cable (RS232-USB) 2 m, installation manual

Dimensions (Unit: mm)



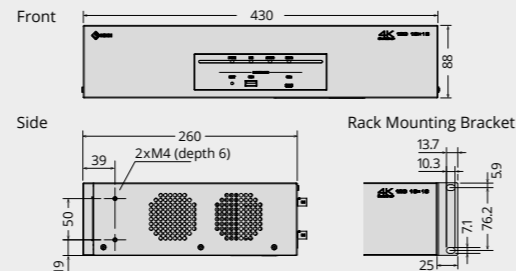
\* Software version 4.3.0 or later



**CXS-1616-12G**  
12G-SDI (16x16) Switcher

<b>Cabinet Color</b>	White
<b>Input Terminal</b>	12G-SDI, 6G-SDI, 3G-SDI, HD-SDI, SD-SDI
<b>Output Terminal</b>	12G-SDI, 6G-SDI, 3G-SDI, HD-SDI, SD-SDI
<b>Network Interface</b>	Standard Terminal
<b>USB (for maintenance)</b>	Front: USB Type-A, Micro-USB (Micro-B) Rear: USB Type-A, Micro-USB (Micro-B)
<b>Input Signal</b>	Supported Signal: 4096 x 2160/50p/59,94p/60p, 3840 x 2160/50p/59,94p/60p, 3840 x 2160/25p/29,97p/30p, 1920 x 1080/50p/59,94p/60p, 1920 x 1080/25p/29,97p/30p, 1280 x 720/50p/59,94p, 720 x 480/59,94, 720 x 576/50i Format: 12G-SDI, 6G-SDI (SMPTE ST2082/ST2081) 3G-SDI Level-A/B (SMPTE ST424, ST425) HD-SDI (SMPTE ST292) SD-SDI (SMPTE ST259-C)
<b>Output Signal</b>	Supported Signal: 4096 x 2160/50p/59,94p/60p, 3840 x 2160/50p/59,94p/60p, 3840 x 2160/25p/29,97p/30p, 1920 x 1080/50p/59,94p/60p, 1920 x 1080/25p/29,97p/30p, 1280 x 720/50p/59,94p, 720 x 480/59,94, 720 x 576/50i Format: 12G-SDI, 6G-SDI (SMPTE ST2082/ST2081) 3G-SDI Level-A/B (SMPTE ST424, ST425) HD-SDI (SMPTE ST292) SD-SDI (SMPTE ST259-C)
<b>Scaling</b>	Input signal: 3840 x 2160/59.94p/60p, 4096 x 2160/59.94p/60p Output signal: 1920 x 1080/59.94p/60p Number of channels: 6ch 4096 x 2160 is sidcut to 3840 x 2160 and then downscale to 1920 x 1080. Frame rate is fixed at 59.94p or 60p for both input and output, every 2 channels. Embedded audio cannot be used when using a scaler.
<b>Frame Delay</b>	Without scaling: 0 frame With scaling: less than 0.01 frame
<b>Power Requirements</b>	AC adapter: AC 100-240 V, 50/60 Hz DC input: DC12V
<b>Maximum Power Consumption</b>	60 W
<b>Net Weight</b>	5.1 kg
<b>Operating Temperature</b>	5-40 °C
<b>Operating Humidity</b>	20-90 % (R. H., non condensing)
<b>Certifications &amp; Standards</b> (Please contact EIZO for the latest information)	CB (IEC62368-1), CE, UKCA, RoHS, China RoHS, WEEE, IEC60601-1
<b>Supplied Accessories</b> (May vary by country. Please contact EIZO for details)	AC power cord, AC adapter, user's manual, rack mounting bracket x 2, rack mounting screw x 4, rubber foot x 8

Dimensions (Unit: mm)



# VIDEO MANAGEMENT OVER IP



**TIPO811 4K**  
IP-Encoder and -Decoder

<b>Model Variations</b>	TIPO811-T: IP-Encoder TIPO811-R: IP-Decoder
<b>Cabinet Color</b>	White
<b>Network</b>	Data Rate: 10 Gbit/s Connector: SFP+ (10 GbE, optional SFP+ module) Cable: LWL duplex LC/LC OM3/OM4 (SFP+ Modul necessary)
<b>Video Signale</b>	Input Resolution: Up to 4K (4096 x 2160), 1 x uncompressed, 60 Hz Output Resolution: Up to 4K (4096 x 2160), 1 x uncompressed, 60 Hz Interface: TIPO811-T: HDMI (in) TIPO811-R: HDMI (out) Modes: Single In/Single Out (up to 4K/60Hz) Multiview: Single, Side-by-Side, Picture-in-Picture, QuadView Audio: Audio jack x 2 (in/out)
<b>Connectors</b>	USB Ports: TIPO811-T: USB-B TIPO811-R: USB-A x 2
<b>Features &amp; Functions</b>	Miscellaneous: Passive cooling Control: Mouse, keyboard and touch control Services: Remote diagnosis, remote firmware update, API control
<b>Power Consumption</b>	17 W, optional: 5 W (for USB)
<b>Power Requirements</b>	12V DC, external power supply, 100-240 AC
<b>Net Weight</b>	520 g
<b>Certifications and Standards</b> (Please contact EIZO for the latest information)	CE, IEC/EN 62368-1, UL 62368-1, CB 62368-1, FCC, RoHS, Reach, WEEE, China RoHS
<b>Optional Accessories</b>	Optical module (SFP+ 10G LC-duplex), power supply, connection and mounting accessories
<b>Dimensions (Unit: mm)</b>	

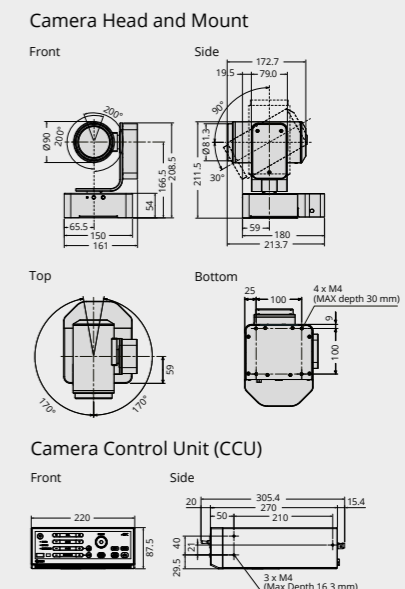
# CAMERA SYSTEM



**SC431 4K**  
4K/60p Surgical Field Camera System

<b>Camera Head</b>	Image Sensor: 1/2.8 type CMOS, single chip type Effective Pixels: 3840 x 2160 Zoom: Optical 30x motorized zoom Focal Length (f=): 4.5 (W)-135 mm (T) Horizontal Field of View (HFOV): 62.3 (W)-2.5° (T) Minimum Object Distance (MOD): 1500 mm (throughout the zoom range) 1000 mm (with close-up lens) Filter Diameter: 72 mm Focus Control: Auto, Manual Iris Control: Auto, Manual Pan Range: +/-170 ° Tilt Range: +90 - -30 deg. Roll Range: +/-200° Pan Speed: 8.6-0.05 °/s, 7 steps Tilt Speed: 8.6-0.05 °/s, 7 steps Roll Speed: 30-0.2 °/s, 7 steps Built-in microphone: Yes
<b>Features and Functions</b>	Image Control: Exposure Mode, Metering Area, YUV Color Matrix, White Balance, Sharpness Gain: Auto, Manual (0-51 db) Shutter Speed: [59.94 Hz output] 1/60-1/10000 [50 Hz output] 1/50-1/10000 Picture Flip: Normal, Flip Image Output Terminal: 4K: HDMI, BNC (12G-SDI) 2K: HDMI, BNC (3G-SDI)
<b>Interface</b>	Video Output: 4K (HDMI): 2160/59,94p, 2160/50p 4K (SDI): 2160/59,94p, 2160/50p 2K (HDMI): 1080/59,94p, 1080/59,94i, 1080/50p, 1080/50i 2K (SDI): 1080/59,94p, 1080/59,94i, 1080/50p, 1080/50i Audio Output: HDMI, SDI, mini jack Remote Control: LAN, RS-232C, IR remote
<b>General</b>	Power Requirements: DC 24 V Power Consumption: 77 W Operating Temperature/Humidity Range: Camera Head: 0-35 °C/20-80 % (non condensing) CCU: 0-40 °C/20-80 % (non condensing) Net Weight: Camera Head: 3.4 kg CCU: 3.0 kg Hole Spacing: 100 x 100 mm
<b>Certifications &amp; Standards</b> (Please contact EIZO for the latest information.)	CE/UKCA, CB, cTUVUS, IEC60601-1, VCCI-A, FCC-A, CAN ICES (A), RoHS, WEEE
<b>Supplied Accessories</b> (May vary by country. Please contact EIZO for details)	AC adapter, AC power cord (2 m), IR remote control, rubber feet x 4, cable cover, Instructions for Use, Quick Reference Guide

Dimensions (unit: mm)



SPECIFICATIONS

# RECORDER



**MIR-1** 4K  
4K Medical Imaging Recorder

Video Recording	Compression	H.265, H.264
	Format	MP4, TS
	Resolution	3840 x 2160 max.
Image Capture	Frame Rate	60 fps, 30 fps
	Format	JPEG, TIFF
Storage	Resolution	3840 x 2160 max.
	Internal	2TB SSD
Video Input	External Media	USB HDD, USB SSD
	Connectors	BNC (12G-SDI), HDMI
Video Output	Resolution	3840 x 2160 max.
	Through-Out	BNC (12G-SDI), HDMI
Audio Input	Monitor-Out	HDMI (1920 x 1080)
	Line-In	3-pole 3.5 mm mini jack
Audio Output	Mic-In	3-pole 3.5 mm mini jack
	Line-Out	3-pole 3.5 mm mini jack
Other Interfaces	Speaker	Integrated
	USB	USB 5Gbps: Type-A x 2 (at front for storage) USB 2.0: Type-A x 4 (at rear for operation)
	LAN	RJ-45 x 2 100BASE-TX, 1000BASE-T NAS: SMB 3.1.1 recommended (compatible with 2.1 or later)
	Serial Interface	RS-232C
	Trigger Input	3-pole 3.5 mm mini jack x 2
Power Input	Touch Panel	5" color LCD, analog resistive
Net Weight	AC100-240 V, 50/60 Hz	Approx. 4.0 kg
Installation		Flat, rack mounting holes: M4 x 3 on both sides
Environmental Requirements	Operating	Temperature: 0-40 °C, Humidity: 20-80 % (R.H., non condensing)
	Storage	Temperature: -20-60 °C, Humidity: 10-90 % (R.H., non condensing)
Certifications & Standards	(Please contact EIZO for the latest information)	
FDA	CE/UKCA (Medical Device), cTUVus, IEC/EN60601-1, VCCI-B, FCC-B, CAN ICES-3(B), RCM, RoHS, China RoHS, WEEE	
Supplied Accessories	Class I	
Dimensions (unit: mm)	AC power cord, HDMI cable, clasper for HDMI cable x 3, instructions for use	

**MIR Browser**  
Medical Imaging Viewer and Management Software

System Requirements	Compatible Operating Systems	Windows 11 Windows 10 (64-bit)
	PC CPU	Intel Core processor The 10th generation (Comet Lake) or later
	PC Memory	8 GB minimum
General	PC Resolution	1920 x 1080 minimum
	Languages	English, Japanese
File Format for Loading	Supported Video Format	H.265, H.264
	Video	H.265: MPEG Audio Layer 2, AAC (Container: TS, MP4) H.264: MPEG Audio Layer 2, AAC (Container: TS, MP4)
File Format for Output	Still Image	JPEG, TIFF
	Video	H.265: MPEG Audio Layer 2, AAC (Container: TS, MP4) Supports Intel Quick Sync Video (QSV) and NVIDIA® NVENC H.264: MPEG Audio Layer 2, AAC (Container: TS, MP4) Supports Intel Quick Sync Video (QSV), NVIDIA NVENC, and software encoding
	Still Image	JPEG, TIFF, PNG

# SIGNAL ROUTING



**PDC0100**  
Analog-DVI Converter



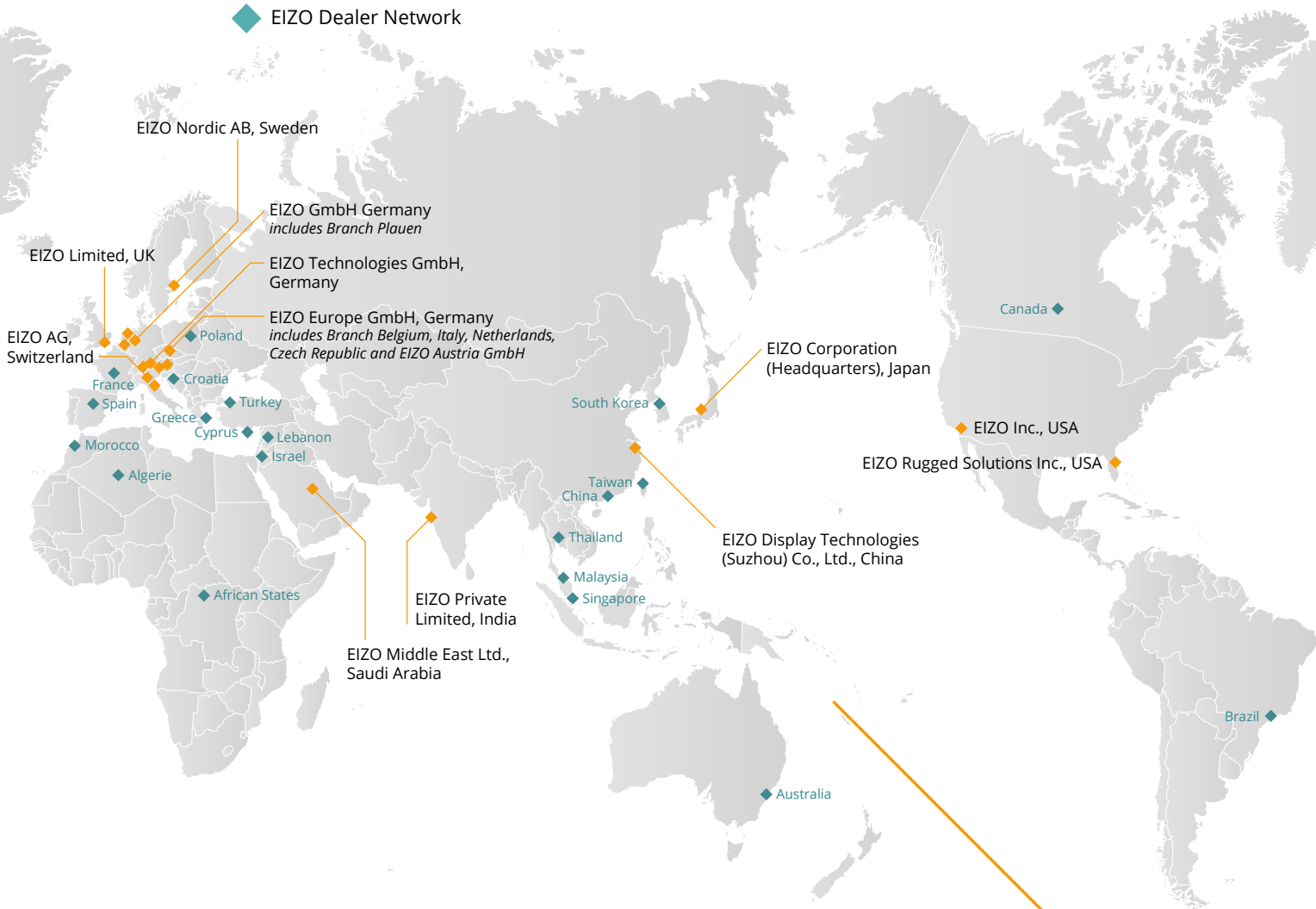
**PDS0800-HD**  
DVI Splitter/Scaler



**TDL3600 / TDL2300**  
DVI Transmission Link

Model Variations	-	-	TDL3600-QL: quad link, 36m TDL3600-DL: dual link, 36m TDL3600-SL: single link, 36m TDL2300-SL: single link, 23m
Cabinet Color	Black	Light Gray	Silver
Input Terminals	DVI-I (digital: DVI, analog: RGB), D-Sub mini 15 pin (Separate, Composite, SoG), BNC (Composite, PAL, NTSC), 4 pin mini DIN (S-Video)	DVI-D (dual link) x 2 (A+B)	TDL3600-QL: DVI-D (dual link) x 2 TDL3600-DL: DVI-D (dual link) TDL3600-SL: DVI-D
Input Performance	Digital: DVI-D (single link), max. 1600 x 1200, 60 Hz, Analog: VGA, SVGA, XGA, SXGA, UXGA, PAL, NTSC, Scanning Frequency: Analog 30-100 kHz, 50-100 Hz	8MP (4096 x 2160: 2048 x 2160 x 2 channel, 60 Hz), 8MP (UHD, 3840 x 2160: 1920 x 2160 x 2 channel, 60 Hz)	TDL3600-QL: 3840 x 2160 TDL3600-DL: 2560 x 1600 TDL3600-SL/TDL2300-SL: 1920 x 1200
Output Terminals	DVI-D	DVI-D (Dual Link) x 4 (A+B x 2), DVI-D (single link), mini DIN (YPbPr)	TDL3600-QL: DVI-D (dual link) x 2 TDL3600-DL: DVI-D (dual link) TDL3600-SL/TDL2300-SL: DVI-D
Output Performance	1280 x 1024 (SXGA), 60 Hz	8MP (4096 x 2160: 2048 x 2160 x 2, 60 Hz) 8MP (3840 x 2160: 1920 x 2160 x 2, 60 Hz) Downscale-output (with UHD input resolution only): FHD (1920 x 1080, 60 Hz) Analog/Composite (1920 x 1080, 60 Hz)	TDL3600-QL: 3840 x 2160 TDL3600-DL: 2560 x 1600 TDL3600-SL/TDL2300-SL: 1920 x 1200
Connector	RJ11 x 2 (Upstream, Downstream), Supported Signal: RS 232-Bus	-	-
Configuration	-	-	-
Power Requirements	AC 100-120 V, 200-240 V: 50 / 60 Hz	AC 100-240 V: 50 / 60 Hz	PC side: through DVI interface Monitor side: 5 V support from monitor Optional: 5 V external power supply
Power Consumption	10 W	36 W	-
Degree of Protection	IP20	IP20	IP20
Net Weight	850 g	1.1 kg	0.1 kg (each transmitter and receiver, without cable)
Mechanical Installation	Injection nut M3 on each side (distance 31.8 mm) x 2	19" rack design, 1 RU	Transmitter module at PC side (DVI-D - RJ45), TDL cable (RJ45 - RJ45), Receiver module at monitor side (RJ45 - DVI-D)
Certifications and Standards	CE, IEC/EN 62368-1, UL/CSA 62368-1 (cME-Tus), EN60601-1-2 Class B, FCC-A, RoHS, RCM, China RoHS, WEEE	CE, IEC/EN 62368-1, EN55032, EN55024, FCC-A, RoHS, WEEE adapter: CE, IEC/EN 62368-1	CE, IEC/EN60601-1, CAN/CSA C22.2 No. 60601-1-08, ANSI/AAMI ES60601-1:2005, EN60601-1-2 Class B, FCC-A, RCM, RoHS, China RoHS, WEEE
Supplied Accessories	AC adapter, signal cable (VGA - VGA, DVI - DVI), remote key pad with 30 m cable	Adapter mini DIN to 3 x cinch, AC adapter	TDL3600-QL: Transmitter x 2, Receiver x 2, mounting set for L5580W/L580W, mounting set for LMM56800/LMM0802, 36 m cable x 4, TDL3600-DL: Transmitter, Receiver, 36 m cable x 2, AC adapter, TDL3600-SL: Transmitter, Receiver, 36 m cable, AC adapter, TDL2300-SL: Transmitter, Receiver, 23 m cable, AC adapter
Dimensions (unit: mm)			

- ◆ EIZO Location
- ◆ EIZO Dealer Network



### Local Contacts

You will find your EIZO contact partners at:  
<https://www.eizo-or.com/contact>

### Contact for Key Accounts

EIZO GmbH	Tel:	+49 7272 9850-0
Carl-Benz-Str. 3	Fax:	+49 7272 9850-471
76761 Rülzheim	E-Mail:	dt-contact@eizo.com
Germany	Web:	<a href="https://www.eizo-or.com">https://www.eizo-or.com</a>

EIZO, the EIZO Logo and CuratOR are registered trademarks of EIZO Corporation. DisplayPort and the DisplayPort Compliance Logo are trademarks of the Video Electronics Standards Association in the United States and other countries. DICOM is the registered trademark of the National Electrical Manufacturers Association for its standards publications relating to digital communications of medical information. The terms HDMI, HDMI High-Definition Multimedia Interface, HDMI trade dress and the HDMI Logos are trademarks or registered trademarks of HDMI Licensing Administrator, Inc. Intel or Intel Core are trademarks of Intel Corporation in the U.S. and/or other countries. Windows is a registered trademark of Microsoft Corporation in the United States and other countries.  
 © 2026 NVIDIA Corporation, NVIDIA is a trademark or registered trademarks of NVIDIA Corporation in the United States and other countries. All other company names, product names, and logos are trademarks or registered trademarks of their respective owners.  
 Copyright © 2026 EIZO GmbH. All rights reserved (03/26)